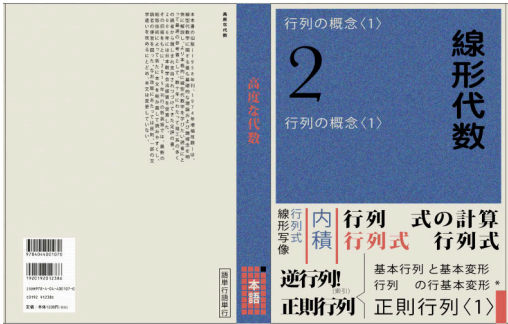


PORT-
FOLIO

JEKATERINA
POTASOVA



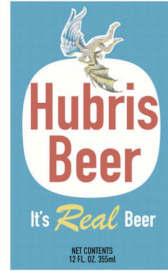
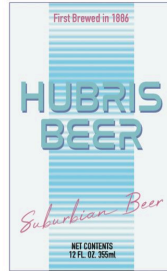
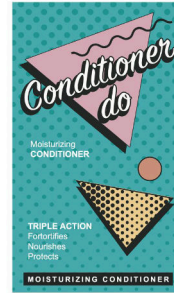
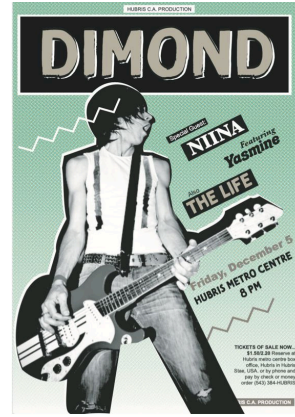
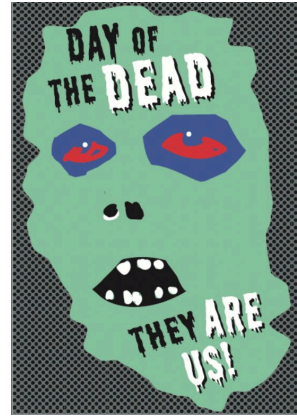
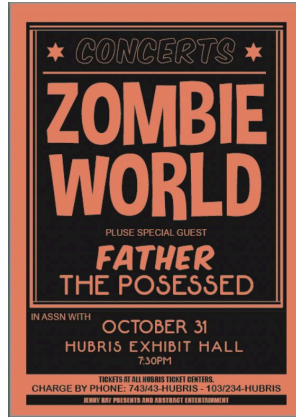
BOOK COVERS



NOTICEBOARD DRESSING/ POSTERS

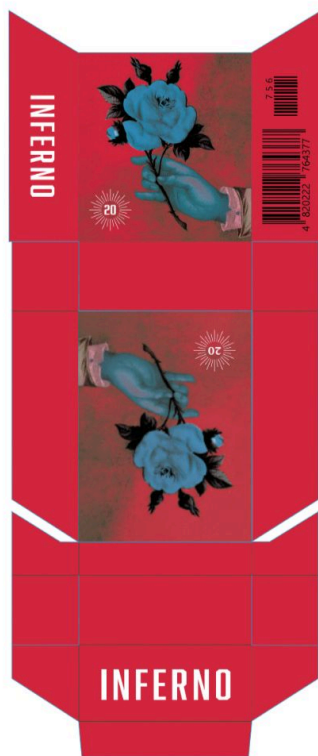


ABOUT 89345 VENDING MACHINE STICKERS



80's US DESIGNS.
"The Loneliest Boy in The
World" film

STYLISTED WORLD.
"Two Neighbors" film,
various graphics



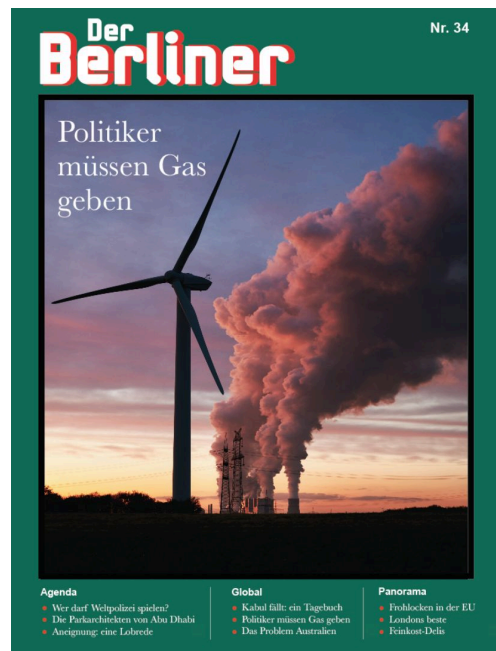
CIGARETTES



EVIL COMPANY LOGO



EVENT BANNERS



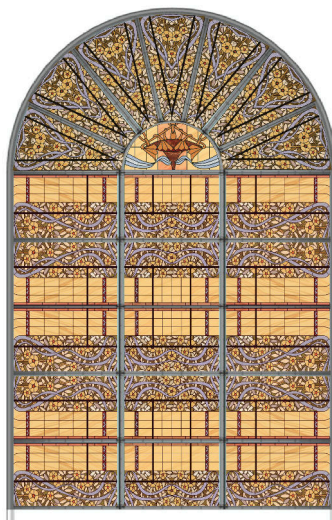
1920s–1950s RUSSIA.

A Gentleman in Moscow:

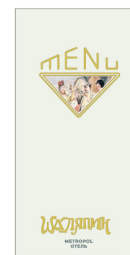
Season 1



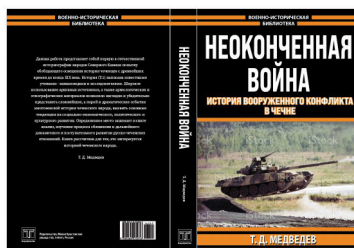
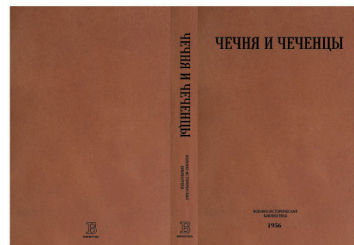
RUSSIAN WINE LABELS



STAINED GLASS CEILING



MENUS ACROSS 3 DECADES



WAR BOOKS

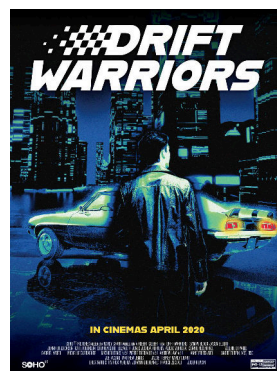
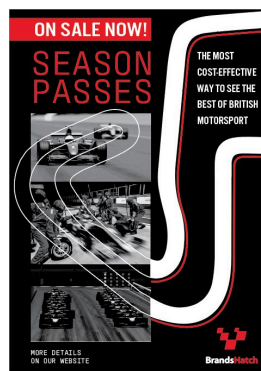


CERTIFICATE WALL



VARIOUS PACKAGING: SWEETS, STAMPS, BEER

SPORTS & TENNIS WORLD. Fifteen-Love: Season 1



HOSPITAL.
Best Interests: Season 1

UNIVERSITY HOSPITAL

NAME: **Dr Samantha Woodham**

POSITION: **Intensive care consultant**

ID: #0526499

PICU

[Barcode]

+ Pediatric Intensive Care Unit (PICU)

Dr Samantha Woodham
Intensive care consultant

Percentage of Pediatric Intensive Care Unit

(0: #0020499)

Pediatric Intensive Care Unit (PICU)

DR SAMANTHA WOODHAM
Intensive care consultant

ID: #0028499

PICU

Property of Pediatric Intensive Care Unit

RCH⁺

CONFIDENTIAL

COMMUNITY CHILD RECORD

All information should be inserted and filed in reverse chronological order, i.e. most recent notes / orders / reports at front of section.

CONFIDENTIAL

**NOT TO BE TAKEN FROM CURRENT RECORD HOLDER
WITHOUT NOTIFYING THE CHILD HEALTH SYSTEM**

[illegible]

OXYCODONE 10MG
CRIPOVEDIONE, MAGNESIUM
STEARATE, Povidone

DONALD MURRAY

TAKE 1 TABLET
EVERY 6 HOURS UP
TO 3 TIMES DAILY

QTY 70 | REFILLS

RX# 17836212

PRESCRIBER: TILLS PHARMACY

KEEP OUT OF REACH OF CHILDREN: THIS MEDICATION IS A SECURE LOCATION OUT OF THE REACH OF CHILDREN TO PREVENT ACCIDENTAL INGESTION, NOT EXCEED RECOMMENDED DOSAGE. USE THE MEDICATION AS DIRECTED BY YOUR HEALTH CARE PROVIDER. CLOSURE OF EYE OR CONTACT WITH EYE OR EYE DOSAGE MAY LEAD TO SERIOUS ADVERSE EFFECTS. DO NOT TAKE IF PRECIPITANT OR PRELIMINARY BLEEDING. CONSULT WITH A HEALTH CARE PROFESSIONAL BEFORE USING THIS MEDICATION IF PRELIMINARY, PLANNING TO BECOME PREGNANT, OR BREASTFEEDING.

USE WITH CAUTION WHEN OPERATING MACHINERY OR DRIVING. THIS MEDICATION MAY CAUSE DROWSINESS, DIZZINESS, OR IMPAIRED JUDGMENT AND ACTIVITIES REQUIRING MANUAL ALERTNESS UNTIL YOU KNOW HOW THE MEDICATION AFFECTS YOU.

DISPOSED OF UNWANTING OR EXPIRED MEDICATION PROPERLY ACCORDING TO LOCAL REGULATIONS OR GUIDELINES. SEEK MEDICAL ADVICE IF EXPERIENCING PERSISTENT OR SEVERE SIDE EFFECTS, ALLERGIC REACTIONS, OR A SYMPTOMS DO NOT IMPROVE.

988

MYANTH PHARMACEUTICALS

TILLS FAMILY PHARMACY
LEEDS PHON: (0113) 446 0729

DO NOT SHARE PRESCRIPTION MEDICATION WITH ANYONE ELSE

PBJ 052890 61456

MURRAY, DONALD
OXYCODONE 20mg

DIRECTIONS FOR USAGE: TAKE ONE AFTER EATING, DO NOT EXCEED 600 DAILY DOSE.
QTY: 90 KEEPFILLS REMAINING: 1
RX #: 912-047

WARNING: MAY CAUSE DROWSINESS AND VERTIGO. ALWAYS TAKE WITH FOOD. ALWAYS WEAR YOUR SEATBELT WHEN OPERATING A VEHICLE OR MACHINERY IF YOU ARE UNDER THE INFLUENCE OF THIS MEDICATION. SEE YOUR DOCTOR IMMEDIATELY.

Important Information
Keep out of the reach of children. Store medication in a secure location out of the reach of children to prevent accidental ingestion. Do not exceed recommended dosage. Use the medication only as directed by a healthcare professional. Exceeding the recommended dosage may result in serious adverse effects. Do not take if pregnant or breastfeeding.

Oxycodone is manufactured in the United States by **Endo Pharmaceuticals**.

Each tablet contains: Oxycodone Hydrochloride, Oxycodone Sodium, Microcrystalline Cellulose, Lactose, Magnesium Hydroxide, Triethyl Citrate, Sodium Starch Glycolate

CAUTION: British Law prohibits the transfer of prescription drugs to other persons. The patient from whom was prescribed this medication is not to be supplied.

