

GABRIELA FANDAKOVA PORTFOLIO

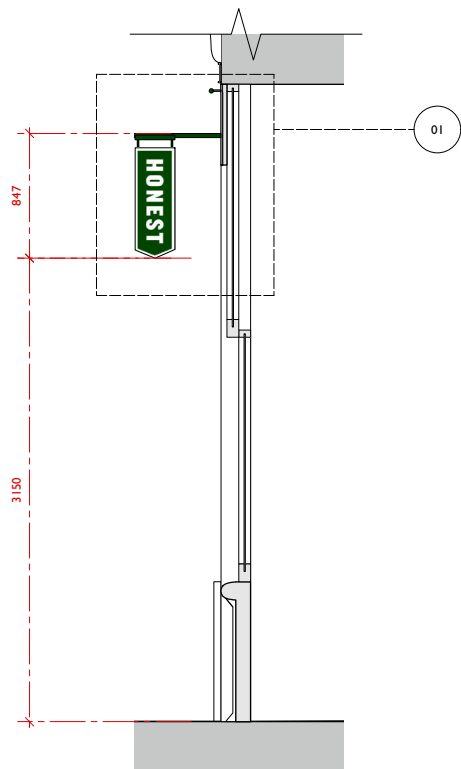
TECHNICAL DRAWINGS
SELECTED COMPLETE PROJECTS

PAGE 3-13
PAGE 14-31

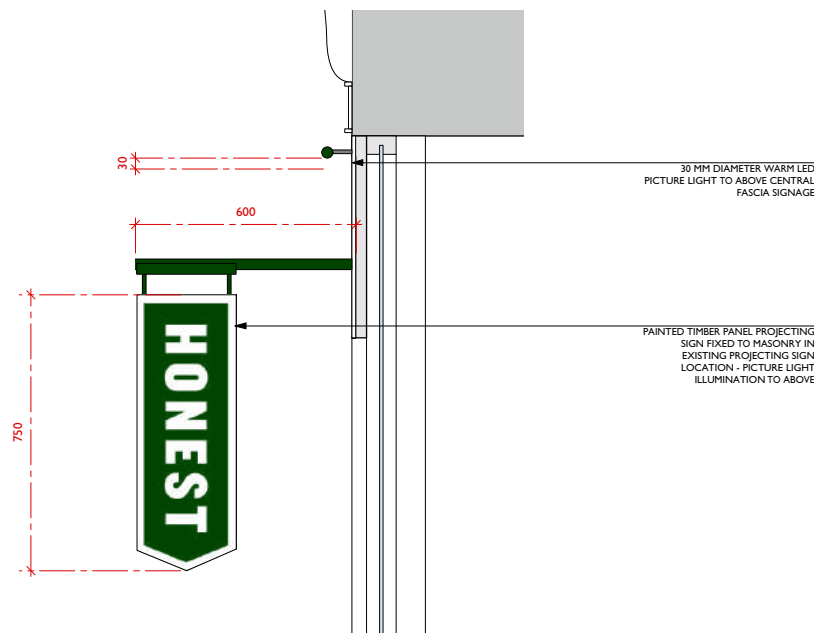
TECHNICAL DRAWINGS



1 ELEVATION
Scale: 1:25



2 SECTION AA
Scale: 1:25



3 DETAIL 01
Scale: 1:10



THIS DRAWING IS THE PROPERTY OF ARTICLE DESIGN STUDIO LTD. COPYRIGHT IS RESERVED BY THEM AND THE DRAWING IS ISSUED ON THE CONDITION THAT IT IS NOT COPIED, REPRODUCED, RETAINED OR DISCLOSED TO ANY UNAUTHORISED PERSON, EITHER WHOLLY OR IN PART WITHOUT CONSENT IN WRITING OF ARTICLE DESIGN STUDIO LTD.

DO NOT SCALE THIS DRAWING. FIGURED DIMENSIONS ONLY ARE TO BE USED IN PREFERENCE TO SMALL SCALE DRAWINGS. ALL DIMENSIONS ARE TO BE CHECKED ON SITE BEFORE ANY WORK PROCEEDS. ANY ERRORS OR OMISSIONS ARE TO BE REPORTED TO THE DESIGNER. IF IN DOUBT ASK.

THE CONTRACTOR IS TO PROVIDE FULL SIZED SETTING OUT DRAWINGS BASED ON INFORMATION CONTAINED IN THIS DRAWING FOR THE DESIGNER'S APPROVAL PRIOR TO COMMENCING MANUFACTURE.

THIS DRAWING IS TO BE READ IN CONJUNCTION WITH ALL THE RELEVANT CONSULTANTS AND/OR SPECIALISTS DRAWINGS OR DOCUMENTS AND ANY DISCREPANCIES OR VARIATIONS ARE TO BE NOTIFIED TO THE DESIGNER BEFORE THE AFFECTED WORK COMMENCES.

REVISIONS:		
CODE:	DATE:	DESCRIPTION:
A	21.08.2019	INFORMATION ON SIDE RETURN ADDED
B	22.08.2019	PROJECTING SIGN UPDATED

ARTICLE
DESIGN
STUDIO

ARTICLE DESIGN STUDIO LTD
STUDIO 4A, PAGNELL STREET
LONDON
SE14 6AY
Tel: +44 (0) 208 378 6629

PROJECT NO: 075
CLIENT/PROJECT: HONEST

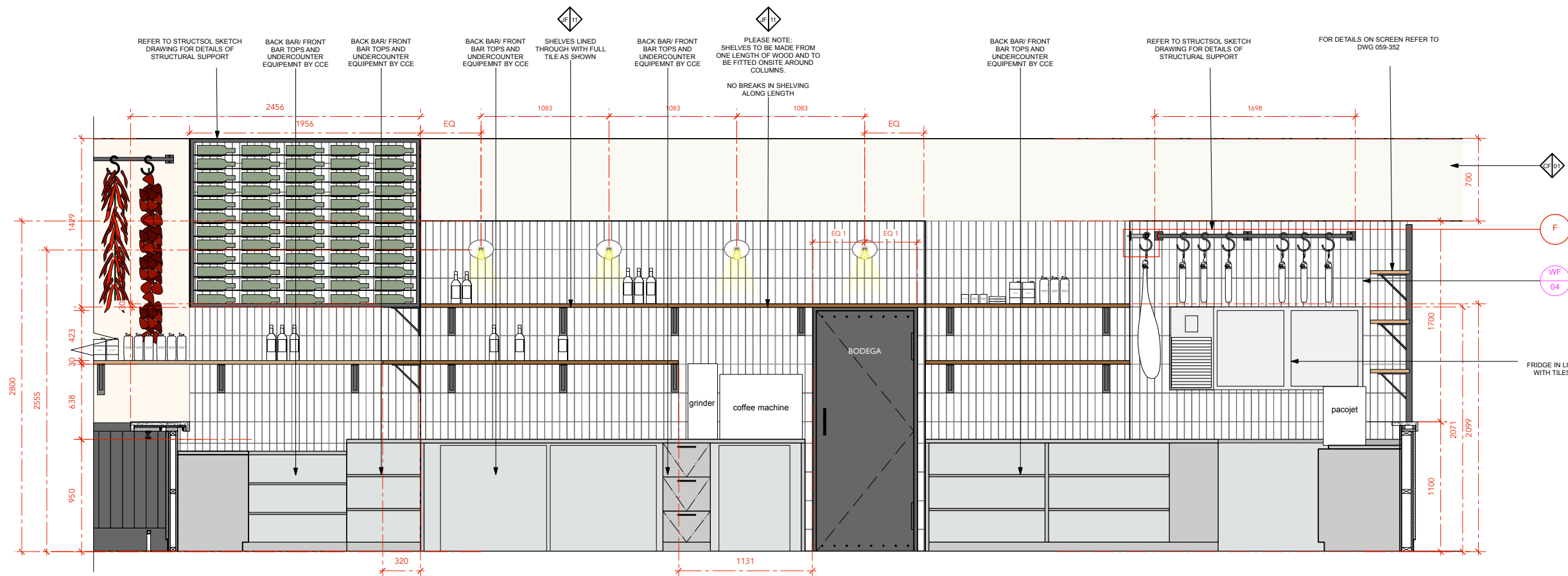
SITE ADDRESS:
81-81 OLD BROAD ST
LONDON
EC2M 1PR

DATE: 21.06.19
DRAWN: GF
CHECKED: KJM
SCALE: AS SHOWN

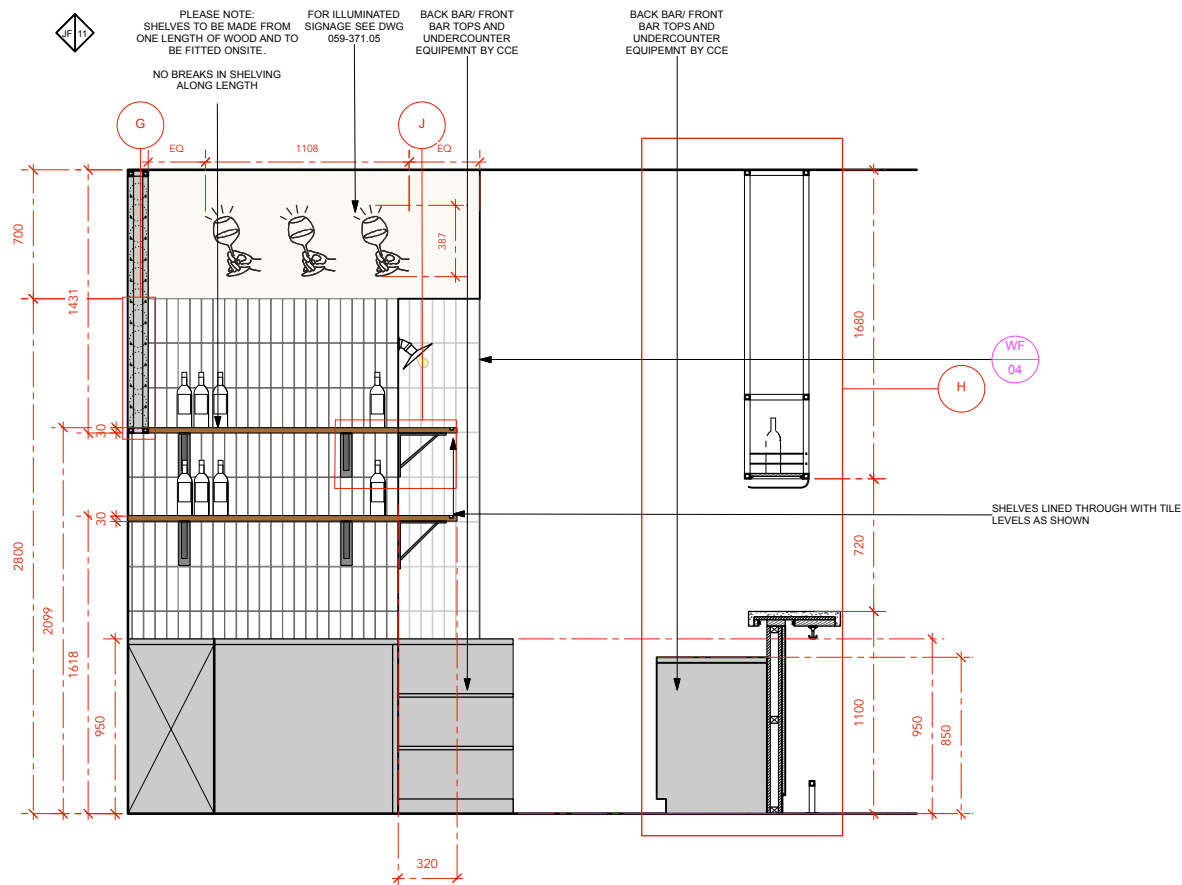
TITLE:
SHOPFRONT ELEVATION -
PROPOSED

STATUS:
DRAFT

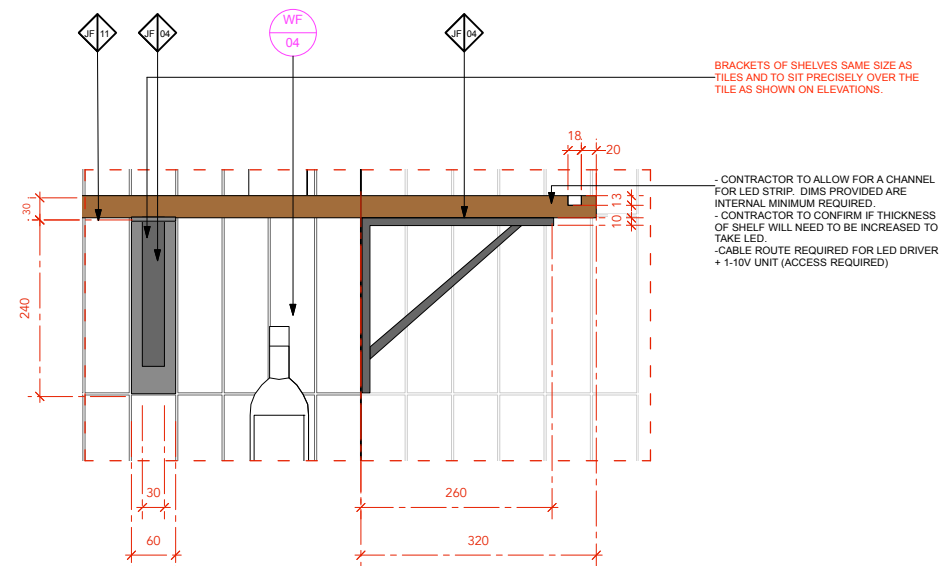
DWG. NO: 075-210
REV: B



1 SECTION A
Scale: 1:20



2 SECTION B
Scale: 1:20

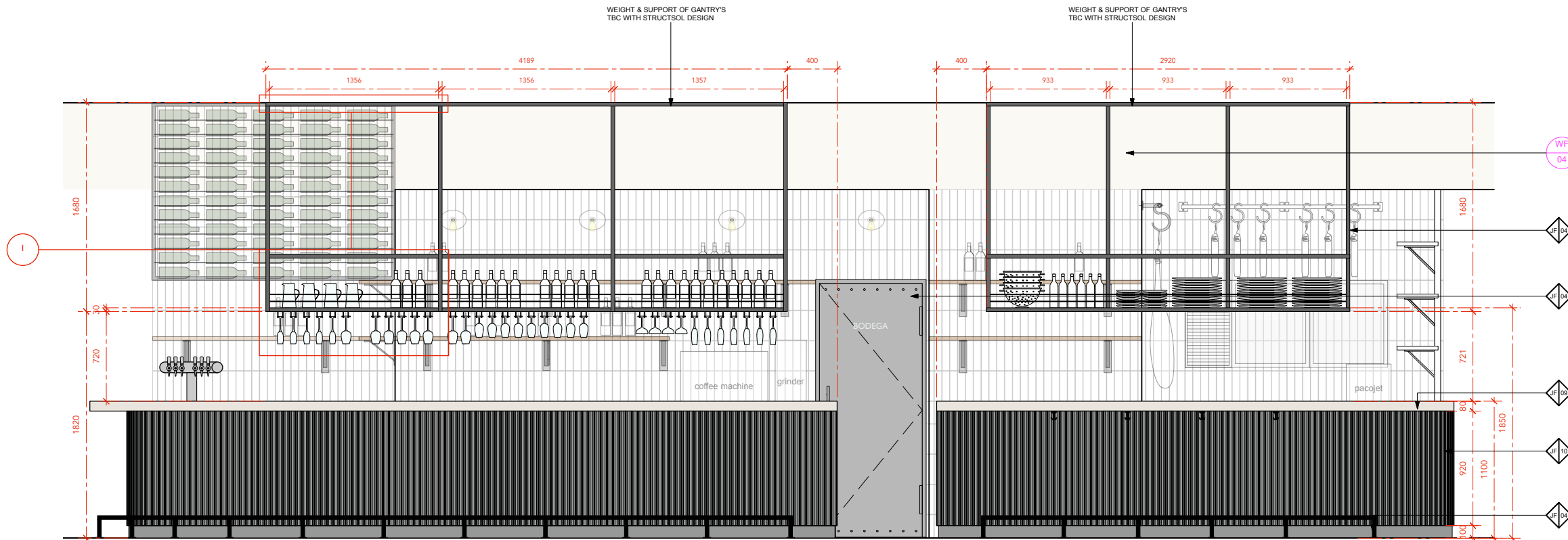


3 DETAIL J - SIDE AND FRONT ELEVATION
Scale: 1:5

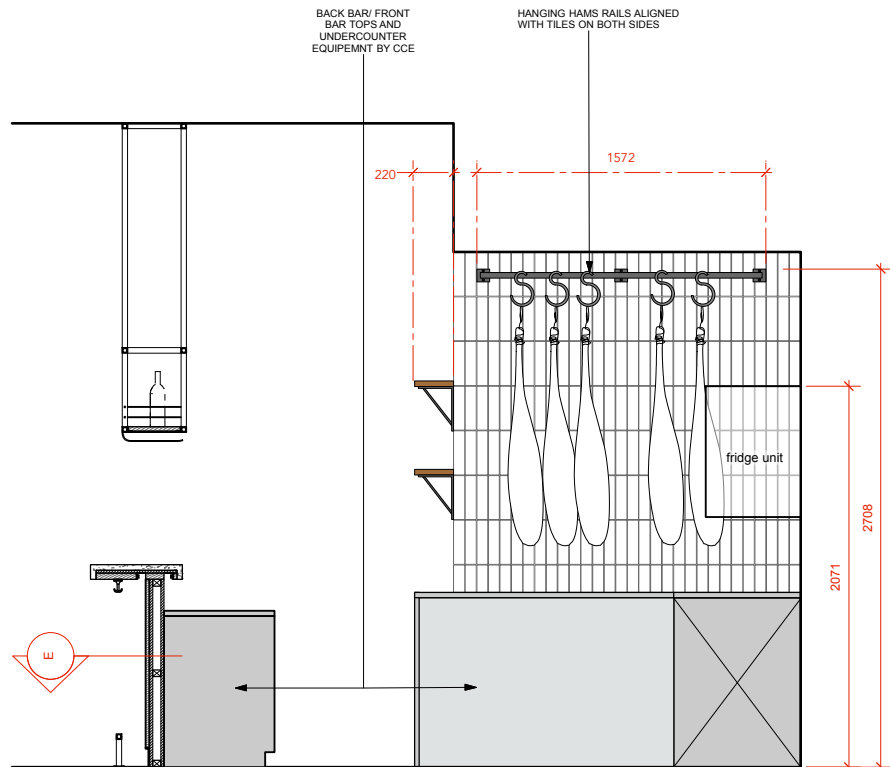
NOTE: TYPICAL SHELF DETAIL. SHELVES EVERYWHERE AT 320MM DEPTH UNLESS STATED OTHERWISE ON PLANS.

FOR DETAILS ON STRUCTURAL SUPPORT TO HANGING GANTRY'S, BOTTLE DISPLAY AND MEAT RAIL REFER TO STRUCTSOL DRAWING 1805-03-SC

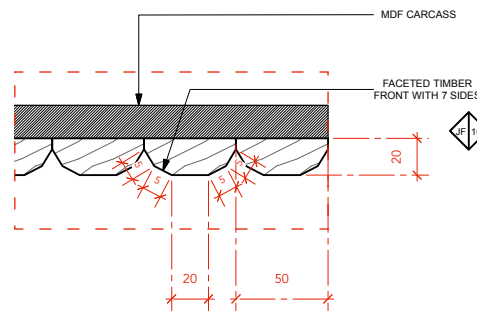
CP01 OFF WHITE PAINT FINISH LITTLE GREENE HOLLYWOOD 25 - DULUX MATCH DULUX EMULSION MATT FINISH	
OFF WHITE TEXTURED TILE: ORIGINS SAND RUSTIC BRICK BY DESIGN WORKS TILES / HTTP://WWW.DESIGNWORKSTILES.COM/ 300MM X 600MM X 12 MM VERTICAL LINEAR LAY 2.3 MM GROUT LINE - MAPEI ANTHRACITE GROUT LEAD TIME 12 WEEKS	
KEY - JOINERY FINISHES	
FUMED SOLID OAK: MATT LACQUER FINISH CONTRACTOR TO PROVIDE SAMPLE MATCH TO ADS SPECIFICATION FOR APPROVAL WEATHER RESISTANT MATT SEALANT APPLIED FOR OUTDOOR JOINERY ITEMS	
BLACKENED STEEL: MATT LACQUER FINISH TO BE WEATHERPROOF FOR EXTERNAL USE. TO BE FULLY SEALED TO PREVENT RUSTING AND WATER DAMAGE. CONTRACTOR TO PROVIDE CONTROL SAMPLE FOR APPROVAL	
CAST CONCRETE FINISH: SEALED WITH MATT LACQUER HYGIENIC SEAL TO SUPPLIERS SPECIFICATION AS PER BRINDISA SOHO. CONTRACTOR TO ENSURE SUITABILITY OF SEALANT TO WITHSTAND LIQUID DAMAGE AND STAINING. COLOUR: LIGHT SAND COLOUR TO MATCH SAMPLE PROVIDED BY ARTICLE SUGGESTED SUPPLIER: CONCRETE CARROT	
FUMED OAK WITH WHITE LIGHT VEIN DECORATIVE BAR CLADDING: FOR DETAILS REFER TO DRAWING 059-300.03 BAR AND PREP COUNTER DETAILS ADS TO PROVIDE FINISH SAMPLE FOR CONTRACTOR TO MATCH TO CONTRACTOR TO PROVIDE SAMPLE PANEL FOR DESIGNER AND CLIENT APPROVAL	
CHARACTER OAK WITH BLACK VEIN CLEAR MATT SEALANT CONTRACTOR TO PROVIDE SAMPLE TO MATCH ADS CONTROL SAMPLE	
COMPOSITE STONE: BLANCO ORION BY SILESTONE CONTRACTOR TO ADVISE ON REQUIRED THICKNESS DURABILITY AND RESILIENCE.	
BLACK LAMINATE: NOT LINED WITH BLACK LAMINATE	
FULL ON SITE SETTING OUT BY CONTRACTOR. CONTRACTOR TO REPORT BACK ANY ON SITE INCONSISTENCIES. CONTRACTOR TO PROVIDE FULL ROD DRAWINGS FOR DESIGNER AND CLIENT APPROVAL	
ALL DIMS TO BE CHECKED ON SITE. DRAWINGS TO BE READ IN CONJUNCTION WITH CCE PLANS, STRUCTSOL SKETCHES, AND INTO LIGHTING DRAWINGS	
THIS DRAWING IS THE PROPERTY OF ARTICLE DESIGN STUDIO LTD. COPYRIGHT IS RESERVED BY THEM AND THE DRAWING IS ISSUED ON THE CONDITION THAT IT IS NOT COPIED, REPRODUCED, RETAINED OR DISCLOSED TO ANY UNAUTHORISED PERSON, EITHER WHOLLY OR IN PART WITHOUT CONSENT IN WRITING OF ARTICLE DESIGN STUDIO LTD.	
DO NOT SCALE THIS DRAWING. FIGURED DIMENSIONS ONLY ARE TO BE USED IN PREFERENCE TO SMALL SCALE DRAWINGS. ALL DIMENSIONS ARE TO BE CHECKED ON SITE BEFORE ANY WORK PROCEEDS. ANY ERRORS OR OMISSIONS ARE TO BE REPORTED TO THE DESIGNER. IF IN DOUBT ASK.	
THE CONTRACTOR IS TO PROVIDE FULL SIZED SETTING OUT DRAWINGS BASED ON INFORMATION CONTAINED IN THIS DRAWING FOR THE DESIGNER'S APPROVAL PRIOR TO COMMENCING MANUFACTURE.	
THIS DRAWING IS TO BE READ IN CONJUNCTION WITH ALL THE RELEVANT CONSULTANTS AND/OR SPECIALISTS DRAWINGS OR DOCUMENTS AND ANY DISCREPANCIES OR VARIATIONS ARE TO BE NOTIFIED TO THE DESIGNER BEFORE THE AFFECTED WORK COMMENCES.	
REVISIONS:	
CODE:	DATE: DESCRIPTION:
A	21.06.18 DESIGN UPDATE
B	02.07.18 DESIGN UPDATE
C	19.07.18 UPDATED
D	25.07.18 TILES CONTINUED FULL HEIGHT BEHIND WINE DISPLAY. SHELF DEPTH AMENDED
ARTICLE DESIGN STUDIO LTD STUDIO 4A, PAGNELL STREET LONDON SE14 6AY Tel: +44 (0) 208 378 6629	
PROJECT NO: 059	CLIENT/PROJECT: BRINDISA BATTERSEA
SITE ADDRESS: UNIT 25 BATTERSEA POWER STATION	
DATE: 12.06.18	DRAWN: GF CHECKED: KJM SCALE: AS SHOWN
TITLE: BAR DETAILS	
STATUS: DETAIL DESIGN	
DWG. NO: 059-300.02	REV: D



1 ELEVATION C
Scale: 1:20



2 SECTION D
Scale: 1:20



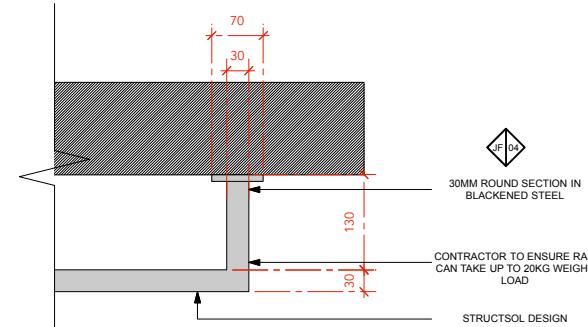
3 DETAIL E - PLAN SECTION
Scale: Half Actual Size



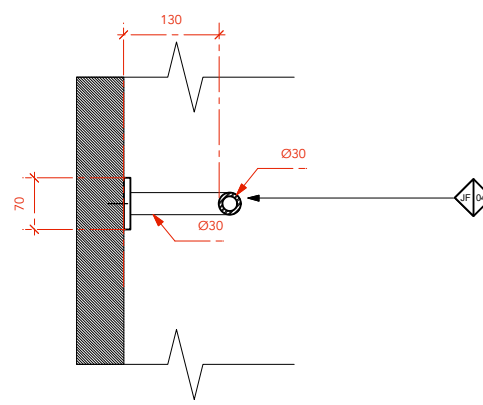
MEAT HOOKS - CLIENT TO CONFIRM NUMBER

https://www.allianceonline.co.uk/meat-hook-extra-heavy-gauge-lbh00006.html?gclid=EAlalQobChMl4_jZs_e-2wIVBLcbCh3-0wbFEAkYDIABEgJCzVD_BwE

FOR DETAILS ON STRUCTURAL
SUPPORT TO HANGING GANTRY'S,
BOTTLE DISPLAY AND MEAT RAIL
REFER TO STRUCTSOL DRAWING
1805-03-SC SK04

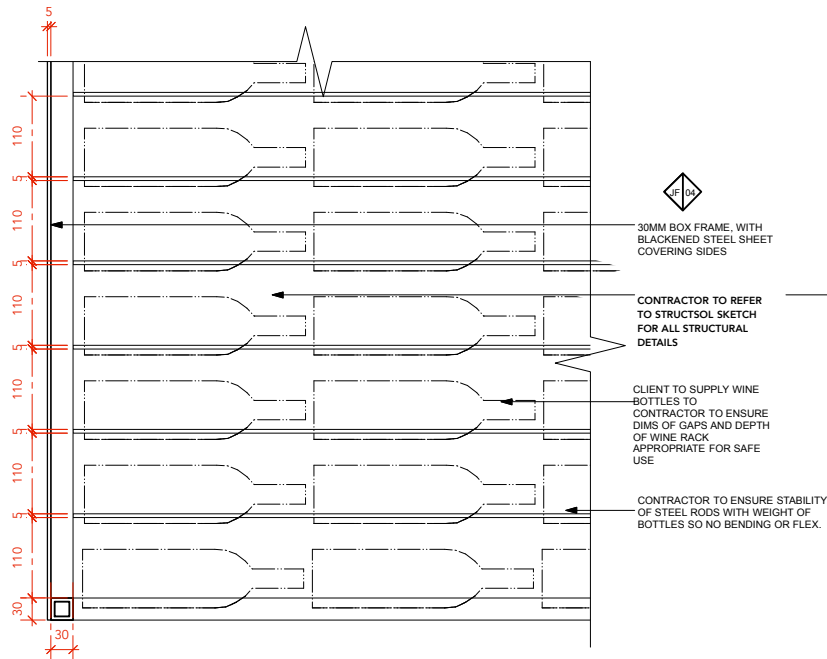


4 DETAIL F - PLAN
Scale: 1:5

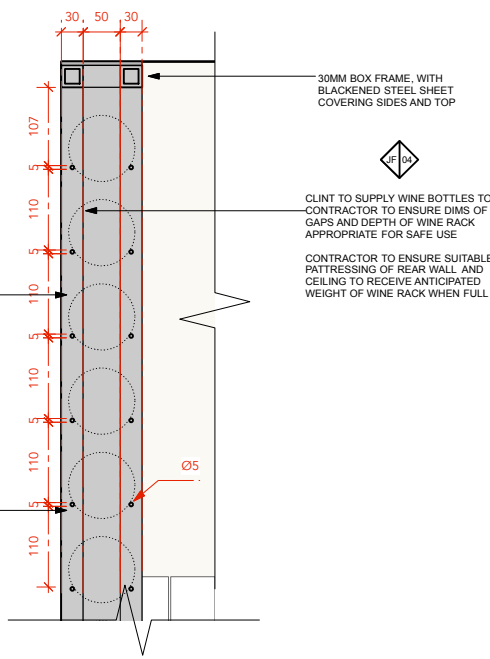


5 DETAIL F - SECTION
Scale: 1:5

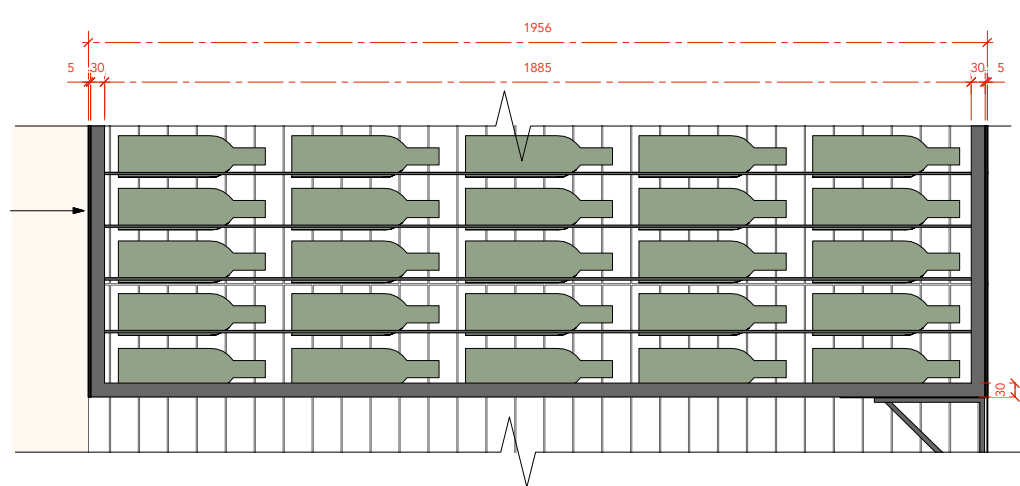
<div></div>	CP01 OFF WHITE PAINT FINISH LITTLE GREENE HOLLYHOCK 25 - DULUX MATCH DULUX EMULSION MATT FINISH		
<div>WF 04</div>	OFF WHITE TEXTURED TILE: ORIGINS SAND RUSTIC BRICK BY DESIGN WORKS TILES / HTTP://WWW.DESIGNWORKSTILES.COM/ 240MM X 60MM X 12 MM VERTICAL LINEAR LAY 2.3 MM GROUT LINE - MAPEI ANTHRACITE GROUT LEAD TIME 12 WEEKS		
KEY - JOINERY FINISHES			
<div>WF 04</div>	FUMED SOLID OAK: MATT LACQUER FINISH CONTRACTOR TO PROVIDE SAMPLE MATCH TO ADS SPECIFICATION FOR APPROVAL WEATHER RESISTANT MATT SEALANT APPLIED FOR OUTDOOR JOINERY ITEMS		
<div>WF 04</div>	BLACKENED STEEL: MATT LACQUER FINISH TO BE WEATHERPROOF FOR EXTERNAL USE. TO BE FULLY SEALED TO PREVENT RUSTING AND WATER DAMAGE. CONTRACTOR TO PROVIDE CONTROL SAMPLE FOR APPROVAL		
<div>WF 04</div>	CAST CONCRETE FINISH: SEALED WITH MATT LACQUER/HYDROSEAL TO SUPPLIERS SPECIFICATION AS PER BRINDISA SOHO. CONTRACTOR TO ENSURE SUITABILITY OF SEALANT TO WITHSTAND LIQUID DAMAGE AND STAINING COLOUR LIGHT SAND COLOUR TO MATCH SAMPLE PROVIDED BY ARTICLE SUGGESTED SUPPLIER CONCRETE CARROT		
<div>WF 04</div>	FUMED OAK WITH WHITE LIGHT VEIN DECORATIVE BAR CLADDING: FOR DETAILS REFER TO DRAWING 059-300-03 BAR AND PREP COUNTER DETAILS CONTRACTOR TO PROVIDE FINISH SAMPLE FOR CONTRACTOR TO MATCH TO CONTRACTOR TO PROVIDE SAMPLE PANEL FOR DESIGNER AND CLIENT APPROVAL		
<div>WF 04</div>	CHARACTER OAK WITH BLACK VEIN CLEAR MATT SEALANT CONTRACTOR TO PROVIDE SAMPLE TO MATCH ADS CONTROL SAMPLE		
<div>WF 04</div>	COMPOSITE STONE: BLANCO ORION BY SILESTONE CONTRACTOR TO ADVISE ON REQUIRED THICKNESS DURABILITY AND RESILIENCE		
<div>WF 04</div>	BLACK LAMINATE: NOT LINED WITH BLACK LAMINATE		
<div>FULL ON SITE SETTING OUT BY CONTRACTOR. CONTRACTOR TO REPORT BACK ANY ON SITE INCONSISTENCIES. CONTRACTOR TO PROVIDE FULL ROD DRAWINGS FOR DESIGNER AND CLIENT APPROVAL</div>			
ALL DIMS TO BE CHECKED ON SITE. DRAWINGS TO BE READ IN CONJUNCTION WITH CCE PLANS, STRUCTSOL SKETCHES, AND INTO LIGHTING DRAWINGS			
THIS DRAWING IS THE PROPERTY OF ARTICLE DESIGN STUDIO LTD. COPYRIGHT IS RESERVED BY THEM AND THE DRAWING IS ISSUED ON THE CONDITION THAT IT IS NOT COPIED, REPRODUCED, RETAINED OR DISCLOSED TO ANY UNAUTHORISED PERSON, EITHER WHOLLY OR IN PART WITHOUT CONSENT IN WRITING OF ARTICLE DESIGN STUDIO LTD.			
DO NOT SCALE THIS DRAWING. FIGURED DIMENSIONS ONLY ARE TO BE USED IN PREFERENCE TO SMALL SCALE DRAWINGS. ALL DIMENSIONS ARE TO BE CHECKED ON SITE BEFORE ANY WORK PROCEEDS. ANY ERRORS OR OMISSIONS ARE TO BE REPORTED TO THE DESIGNER. IF IN DOUBT ASK.			
THE CONTRACTOR IS TO PROVIDE FULL SIZED SETTING OUT DRAWINGS BASED ON INFORMATION CONTAINED IN THIS DRAWING FOR THE DESIGNER'S APPROVAL PRIOR TO COMMENCING MANUFACTURE.			
THIS DRAWING IS TO BE READ IN CONJUNCTION WITH ALL THE RELEVANT CONSULTANTS AND/OR SPECIALISTS DRAWINGS OR DOCUMENTS AND ANY DISCREPANCIES OR VARIATIONS ARE TO BE NOTIFIED TO THE DESIGNER BEFORE THE AFFECTED WORK COMMENCES.			
REVISIONS:			
CODE:	DATE:	DESCRIPTION:	
A	21.06.18	DESIGN UPDATE	
B	02.07.18	DESIGN UPDATE	
C	20.07.18	ADDED SUPPORT TO GANTRY	
D	25.07.18	TILES CONTINUED FULL HEIGHT BEHIND WINE DISPLAY	
<div>ARTICLE DESIGN STUDIO LTD STUDIO 4A, PAGNELL STREET LONDON SE14 6AY Tel: +44 (0) 208 378 6629</div>			
PROJECT NO:	CLIENT/PROJECT:		
059	BRINDISA BATTERSEA		
SITE ADDRESS: UNIT 25 BATTERSEA POWER STATION			
DATE:	DRAWN:	CHECKED:	SCALE:
12.06.18	GF	KJM	AS SHOWN
TITLE:		STATUS:	
BAR DETAILS		DETAIL DESIGN	
DWG. NO:		REV:	
059-300.03		D	



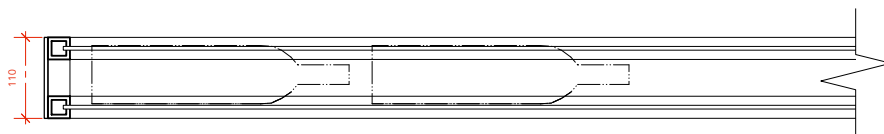
1 DETAIL G - FRONT SECTION
Scale: 1:5



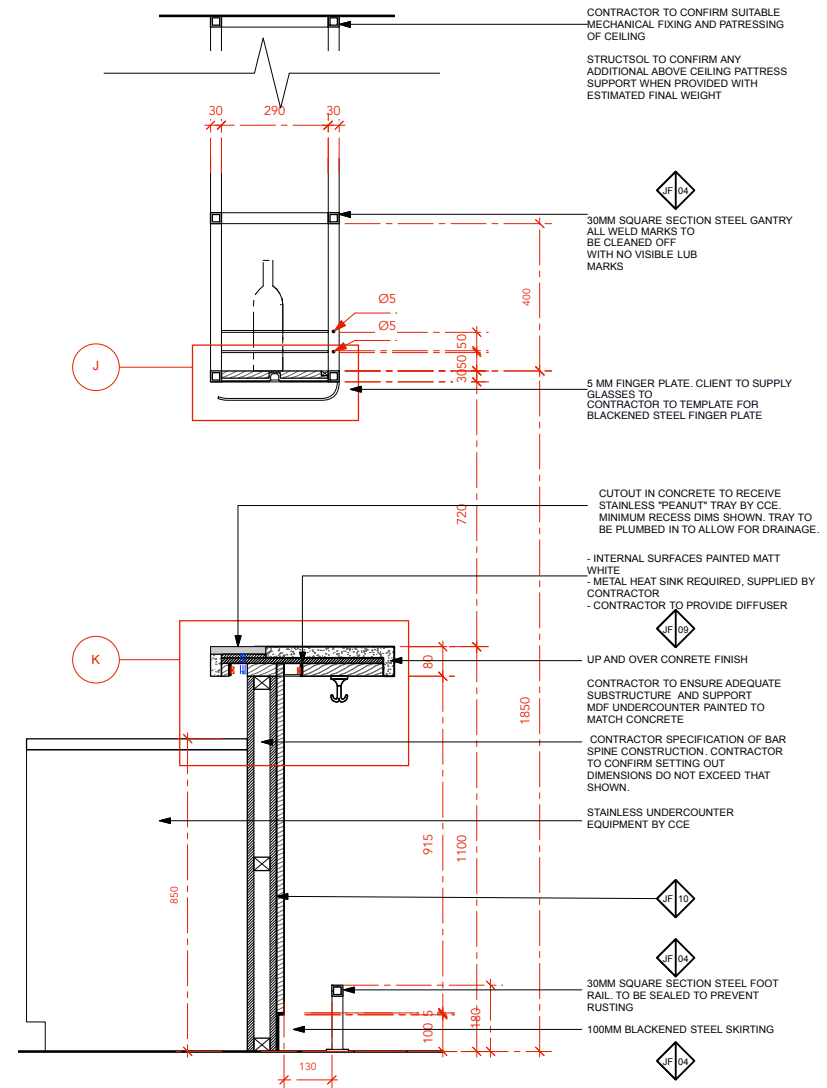
2 DETAIL G - SIDE SECTION
Scale: 1:5



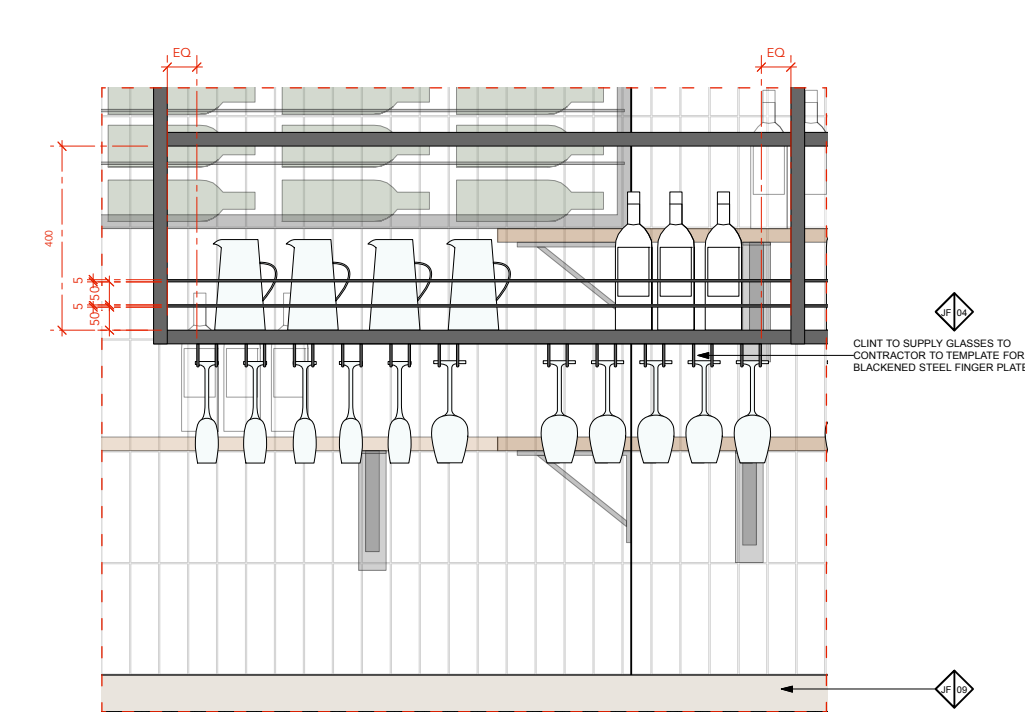
3 DETAIL G - FRONT ELEVATION
Scale: 1:8



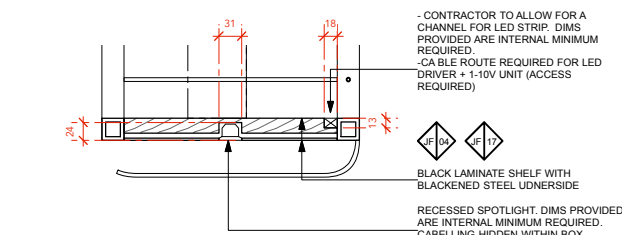
4 DETAIL G - PLAN SECTION
Scale: 1:5



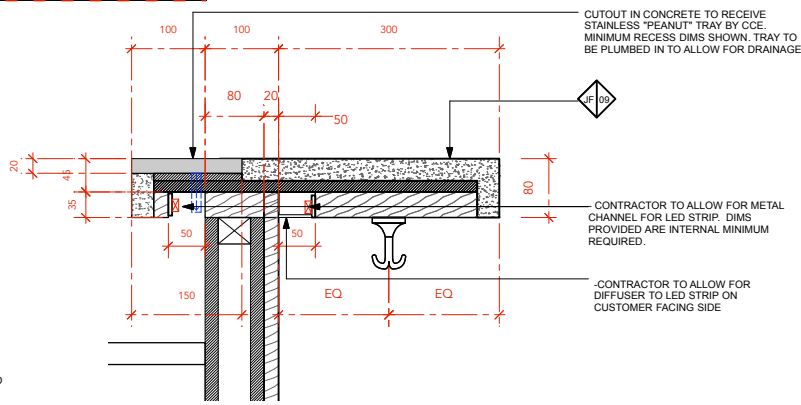
5 DETAIL H
Scale: 1:10



6 DETAIL I
Scale: 1:8



7 DETAIL J
Scale: 1:5



15 DETAIL K
Scale: 1:5



WINE RACK DETAIL REFERENCE



BAR COAT HOOKS

<https://www.abodent.com/ok-a-shelf-hook.html>

SEE PLAN DWG FOR QUANTITIES

CP01	OFF WHITE PAINT FINISH LITTLE GREENE HOLLYHOCK 25 - DULUX MATCH DULUX EMULSION MATT FINISH
CP02	OFF WHITE TEXTURED TILE: ORIGINS SAND RUSTIC BRICK BY DESIGN WORKS TILES / HTTP://WWW.DESIGNWORKSTILES.COM/ 30MM X 60MM X 12 MM VERTICAL LINEAR LAY 2.3 MM GROUT LINE - MAPEI ANTHRACITE GROUT LEAD TIME 12 WEEKS
KEY - JOINERY FINISHES	
CP03	FUMED SOLID OAK: MATT LACQUER FINISH CONTRACTOR TO PROVIDE SAMPLE MATCH TO ADS SPECIFICATION. FOR APPROVAL WEATHER RESISTANT MATT SEALANT APPLIED FOR OUTDOOR JOINERY ITEMS
CP04	BLACKENED STEEL: MATT LACQUER FINISH. TO BE WEATHERPROOF FOR EXTERNAL USE. TO BE FULLY SEALED TO PREVENT RUSTING AND WATER DAMAGE. CONTRACTOR TO PROVIDE CONTROL SAMPLE FOR APPROVAL
CP05	CAST CONCRETE FINISH: SEALED WITH MATT LACQUER/HYGIENIC SEAL TO SUPPLIERS SPECIFICATION AS PER BRINDISA SHOW. CONTRACTOR TO ENSURE SUITABILITY OF SEALANT TO WITHSTAND LIQUID DAMAGE AND STAINING COLOUR: LIGHT SAND COLOUR TO MATCH SAMPLE PROVIDED BY ARTICLE SUGGESTED SUPPLIER CONCRETE CARROT
CP06	FUMED OAK WITH WHITE LIGHT VEIN DECORATIVE BAR CLADDING: FOR DETAILS REFER TO DRAWING 059-300-03 BAR AND PREP COUNTER DETAILS ADS TO PROVIDE FINISH SAMPLE FOR CONTRACTOR TO MATCH TO. CONTRACTOR TO PROVIDE SAMPLE PANEL FOR DESIGNER AND CLIENT APPROVAL
CP07	CHARACTER OAK WITH BLACK VEIN CLEAR MATT SEALANT CONTRACTOR TO PROVIDE SAMPLE TO MATCH ADS CONTROL SAMPLE
CP08	COMPOSITE STONE: BLANCO ORION BY SILESTONE CONTRACTOR TO ADVISE ON REQUIRED THICKNESS DURABILITY AND RESILIENCE.
CP09	BLACK LAMINATE: HOF LINED WITH BLACK LAMINATE

FULL ON SITE SETTING OUT BY CONTRACTOR. CONTRACTOR TO REPORT BACK ANY ON SITE INCONSISTENCIES. CONTRACTOR TO PROVIDE FULL ROD DRAWINGS FOR DESIGNER AND CLIENT APPROVAL

ALL DIMS TO BE CHECKED ON SITE. DRAWINGS TO BE READ IN CONJUNCTION WITH CCE PLANS, STRUCTSOL SKETCHES, AND INTO LIGHTING DRAWINGS

THIS DRAWING IS THE PROPERTY OF ARTICLE DESIGN STUDIO LTD. COPYRIGHT IS RESERVED BY THEM AND THE DRAWING IS ISSUED ON THE CONDITION THAT IT IS NOT COPIED, REPRODUCED, RETAINED OR DISCLOSED TO ANY UNAUTHORISED PERSON, EITHER WHOLLY OR IN PART WITHOUT CONSENT IN WRITING OF ARTICLE DESIGN STUDIO LTD.

DO NOT SCALE THIS DRAWING. FIGURED DIMENSIONS ONLY ARE TO BE USED IN PREFERENCE TO SMALL SCALE DRAWINGS. ALL DIMENSIONS ARE TO BE CHECKED ON SITE BEFORE ANY WORK PROCEEDS. ANY ERRORS OR OMISSIONS ARE TO BE REPORTED TO THE DESIGNER. IF IN DOUBT, ASK.

THE CONTRACTOR IS TO PROVIDE FULL SIZED SETTING OUT DRAWINGS BASED ON INFORMATION CONTAINED IN THIS DRAWING FOR THE DESIGNER'S APPROVAL PRIOR TO COMMENCING MANUFACTURE.

THIS DRAWING IS TO BE READ IN CONJUNCTION WITH ALL THE RELEVANT CONSULTANTS AND/OR SPECIALISTS DRAWINGS OR DOCUMENTS AND ANY DISCREPANCIES OR VARIATIONS ARE TO BE NOTIFIED TO THE DESIGNER BEFORE THE AFFECTED WORK COMMENCES.

REVISIONS:		
CODE:	DATE:	DESCRIPTION:
A	21.06.18	DESIGN UPDATE
B	02.07.18	DESIGN UPDATE
C	19.07.18	PEANUT TRAY DETAIL AMENDED. NOTES ADDED
D	25.07.18	DETAIL K ADDED. LED FROM BOTTLE DISPLAY OMITTED

ARTICLE
DESIGN STUDIO LTD
STUDIO 4A, PAGNELL STREET
LONDON
SE14 6AY
Tel: +44 (0) 208 378 6629

PROJECT NO: 059
CLIENT/PROJECT: BRINDISA BATTERSEA

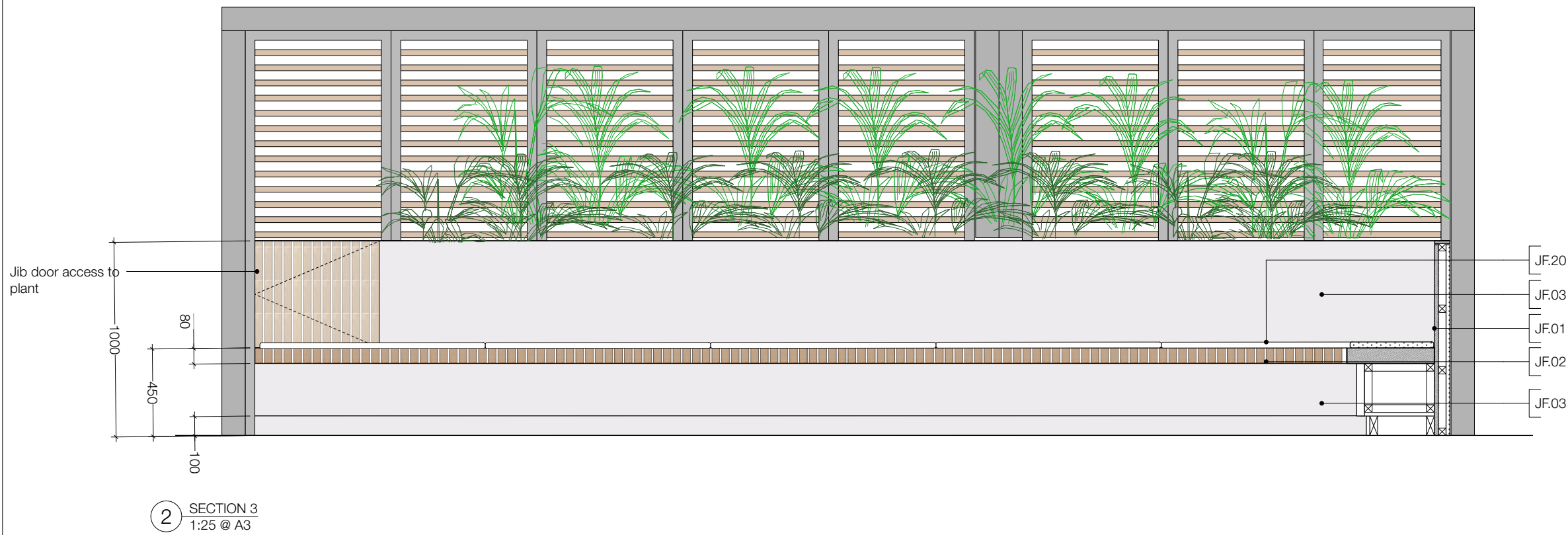
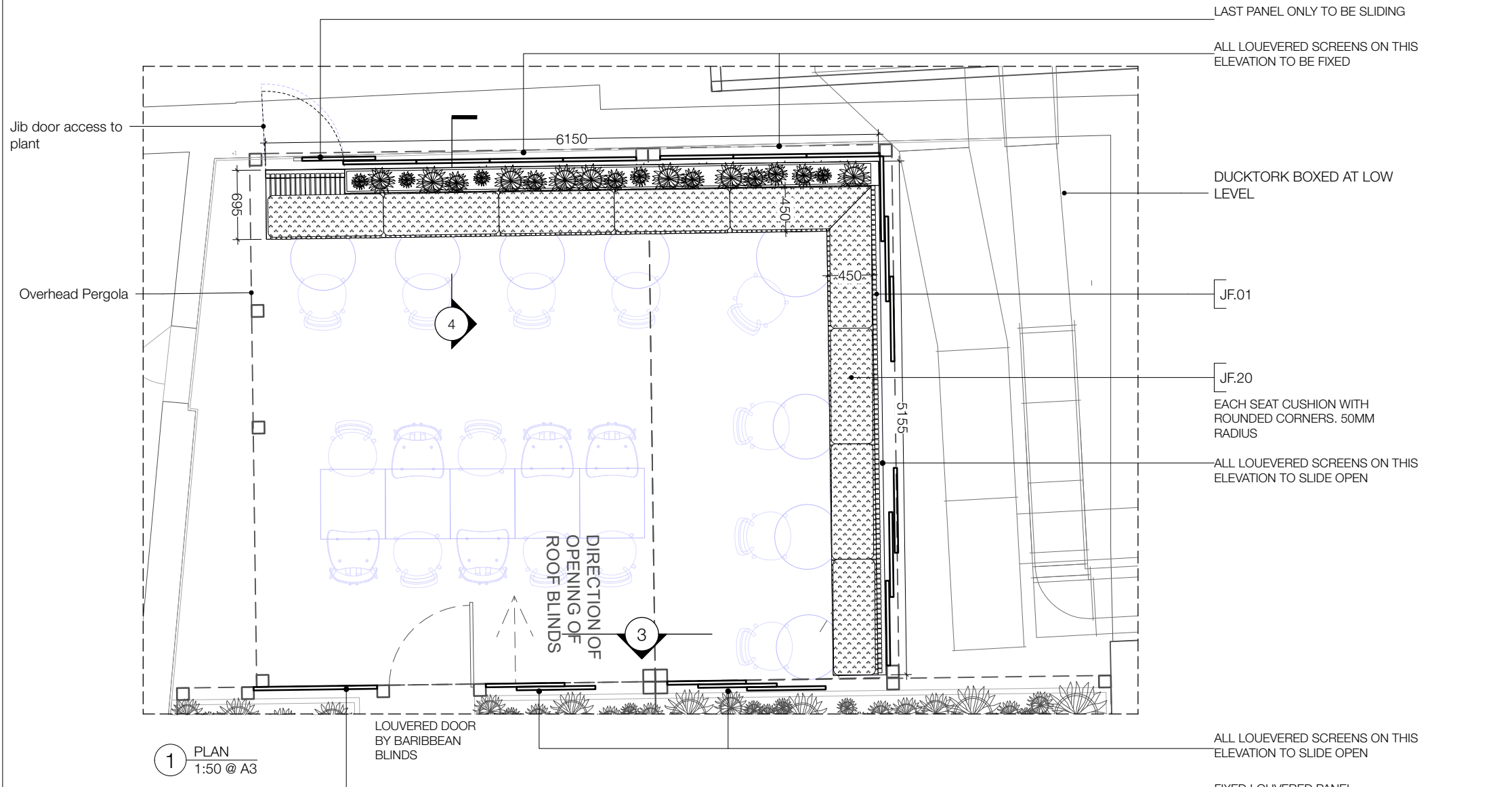
SITE ADDRESS:
UNIT 25
BATTERSEA POWER STATION

DATE: 12.06.18
DRAWN: GF
CHECKED: KJM
SCALE: AS SHOWN

TITLE:
BAR DETAILS

STATUS:
DETAIL DESIGN

DWG. NO: 059-300.04
REV: D



REFERENCE IMAGERY

GENERAL NOTES.

All dimensions to be checked on site prior to commencement of any works, and/or preparation of any shop drawings.

Sizes of and dimensions to any structural elements are indicative only. See structural engineers drawings for actual sizes / dimensions.

Sizes of and dimensions to any service elements are indicative only. See service engineers drawings for actual sizes and dimensions.

This drawing to be read in conjunction with all other Architect's drawings, specifications and other Consultants' information.

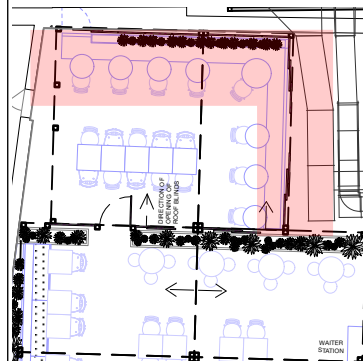
All proprietary systems shown on this drawing are to be installed strictly in accordance with the Manufacturers/Suppliers recommended details.

Any discrepancies between information shown on this drawing and any other contract information or manufacturers/suppliers recommendations is to be brought to the attention of the Architect

DO NOT SCALE FROM THIS DRAWING.

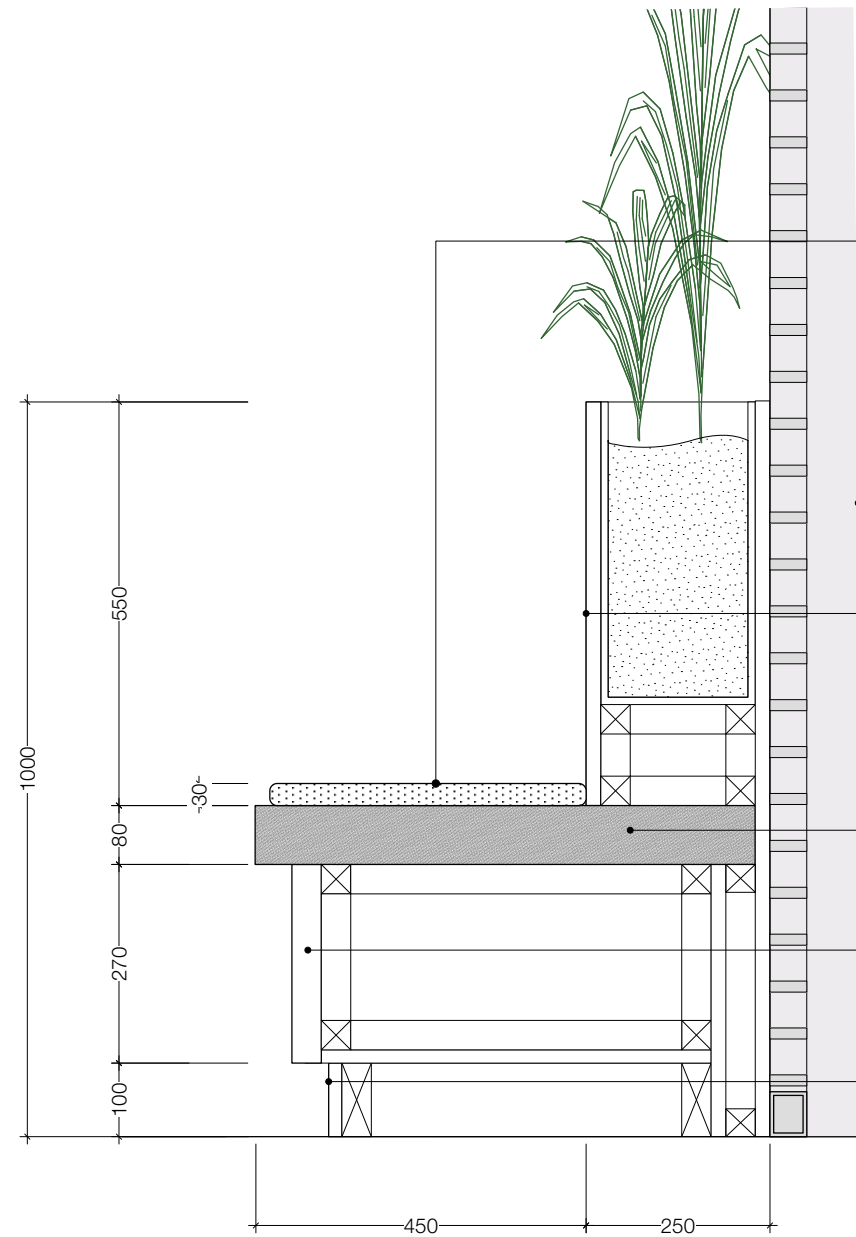
NOTES.

ALL DIMENSIONS TO BE CONFIRMED ON SITE!



KEY PLAN L05 1:200

- STAGE 3 (DD)		21.05.21
REVISION	DATE	
<div>Feix&Merlin Architects</div> <div>UNIT C2 - BLCK, The Bussey Building</div> <div>133 Copeland Road</div> <div>www.feixandmerlin.com</div>		
CLIENT	THE CONDUIT	
PROJECT	6 LANGLEY STREET	
DRAWING	GENERAL ARRANGEMENT PJ.01.1 - Events Banquette	
SCALE	AS MARKED	
DATE	APRIL 2021	DRAWN BY F&M
DWG No.	0389_650.1_ID	REVISION -
DRAWING STATUS	STAGE 3 (DD)	



1 SECTION 4
1:10 @ A3

JF.20
THK REMOVABLE SEAT PAD ON
VELCRO WITH SELF PIPING
DETAIL. CONTRACTOR TO ALLOW
FOR HIGH DENSITY FOAM
CUSHION SUITABLE FOR
OUTDOOR USE. UPHOLSTERY TO
BE REMOVABLE, SPARES TO BE
ORDERED

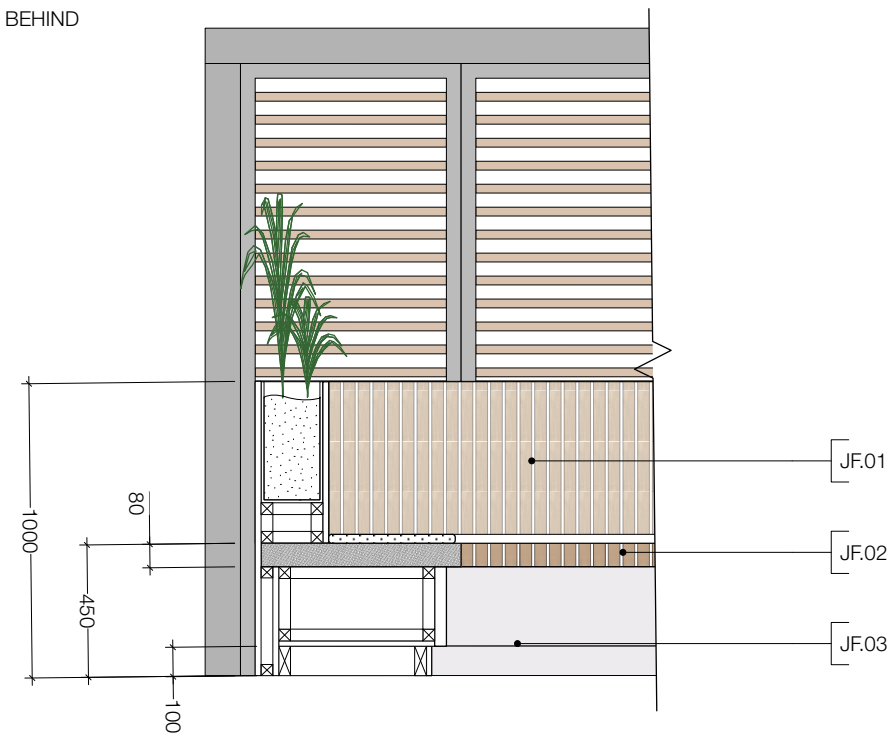
PERGOLA STRUCTURE BEHIND
BANQUETTE

JF.03

JF.02

JF.03

JF.03



2 SECTION 5
1:25 @ A3

GENERAL NOTES.

All dimensions to be checked on site prior to commencement of any works, and/or preparation of any shop drawings.

Sizes of and dimensions to any structural elements are indicative only. See structural engineers drawings for actual sizes / dimensions.

Sizes of and dimensions to any service elements are indicative only. See service engineers drawings for actual sizes and dimensions.

This drawing to be read in conjunction with all other Architect's drawings, specifications and other Consultants' information.

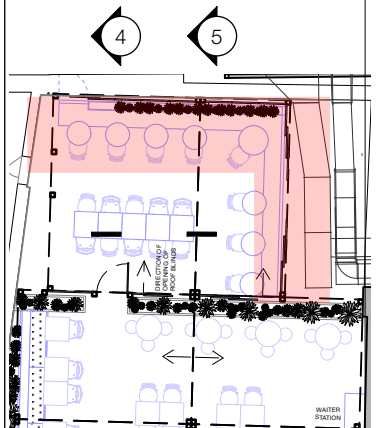
All proprietary systems shown on this drawing are to be installed strictly in accordance with the Manufacturers/Suppliers recommended details.

Any discrepancies between information shown on this drawing and any other contract information or manufacturers/suppliers recommendations is to be brought to the attention of the Architect

DO NOT SCALE FROM THIS DRAWING.

NOTES.

ALL DIMENSIONS TO BE CONFIRMED
ON SITE!



KEY PLAN L05 1:200

- STAGE 3 (DD) 21.05.21

REVISION DATE

Feix&Merlin Architects
UNIT C2 - BLCK, The Bussey Building
133 Copeland Road
www.feixandmerlin.com

CLIENT THE CONDUIT

PROJECT 6 LANGLEY STREET

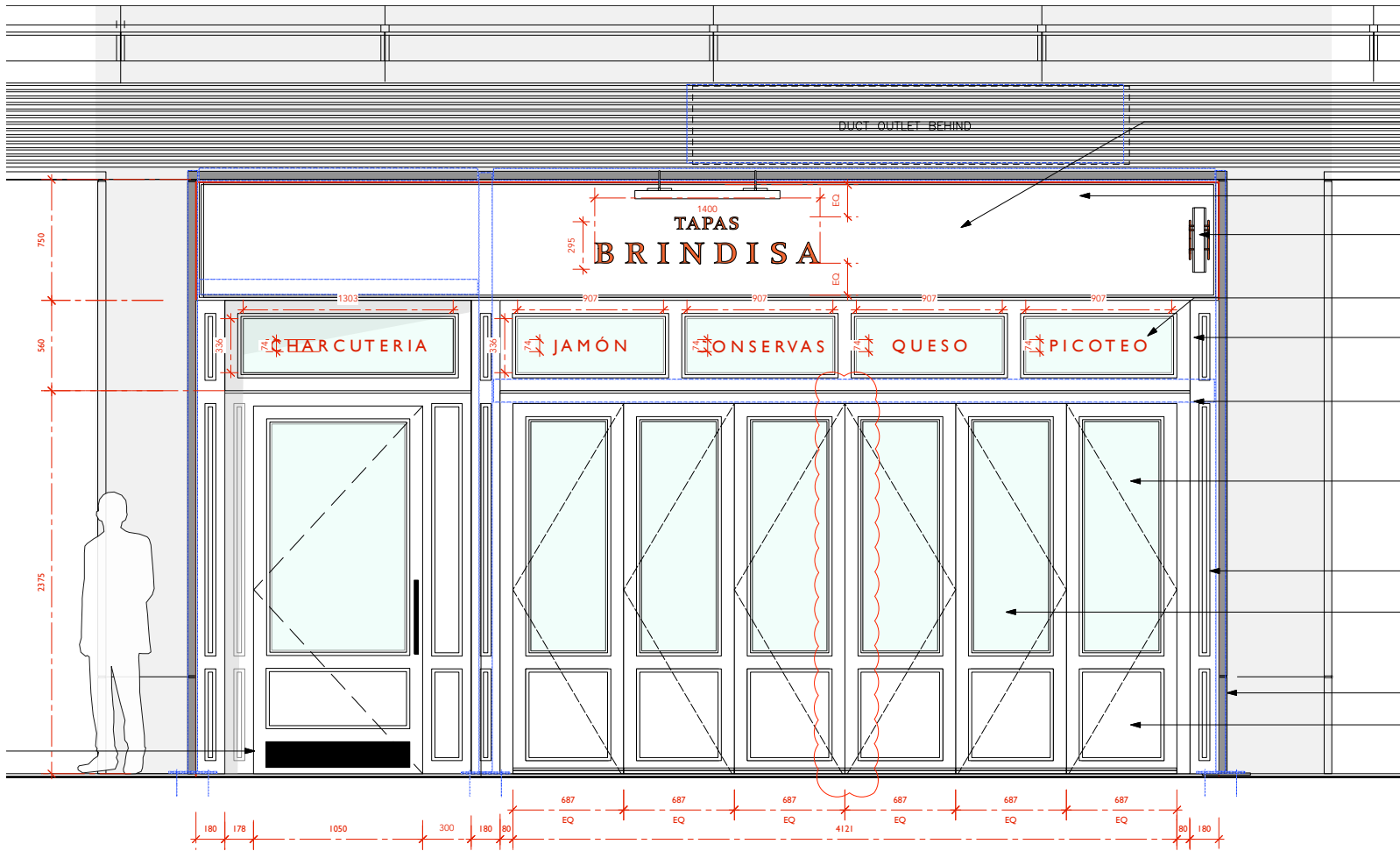
DRAWING **GENERAL ARRANGEMENT**
PJ.01.2 - Events Banquette

SCALE AS MARKED

DATE APRIL 2021 DRAWN BY F&M

DWG No. **0389_650.2_ID** REVISION -

DRAWING STATUS **STAGE 3 (DD)**



DECORATED ROUGH PLASTER FASCIA
BAND WITH PERIMETER ALUMINIUM
BEAD DETAIL. SIGN PAINTED LOGO
ILLUMINATED VIA TROUGH LIGHT. SEE
DWG 059_373

SPECIALIST PLASTER FINISH TO FASCIA
BAND.
ILLUMINATED PROJECTING SIGN.
REFER TO DETAIL DWG 059_374

FIXED TOUGHENED GLASS DOOR
LIGHT PANELS ABOVE BI FOLD DOORS.
SIGN PAINTED TEXT

ALUMINIUM SHOPFRONT
POWERCOATED IN WF11

BLUE LINE INDICATES STRUCTURAL
STEELWORK CONCEALED WITHIN
ALUMINIUM FRAMEWORK

TOP HUNG ALUMINIUM BIFOLD
DOUBLE DOOR LEAF SETS WITH
TOUGHENED GLAZED PANEL TO HIGH
LEVEL. TO BE SUPPORTED BY
CONCEALED STEEL FRAME. TO
INCLUDE FLOOR TRACK

RAISED AND FIELDED STYLE DETAIL TO
ALUMINIUM SURROUND

IRONMONGERY TO BI-FOLDS TO
CONTRACTOR SPECIFICATION IN MATT
BLACK FINISH. SPECIFICATION TO BE
APPROVED BY ADS

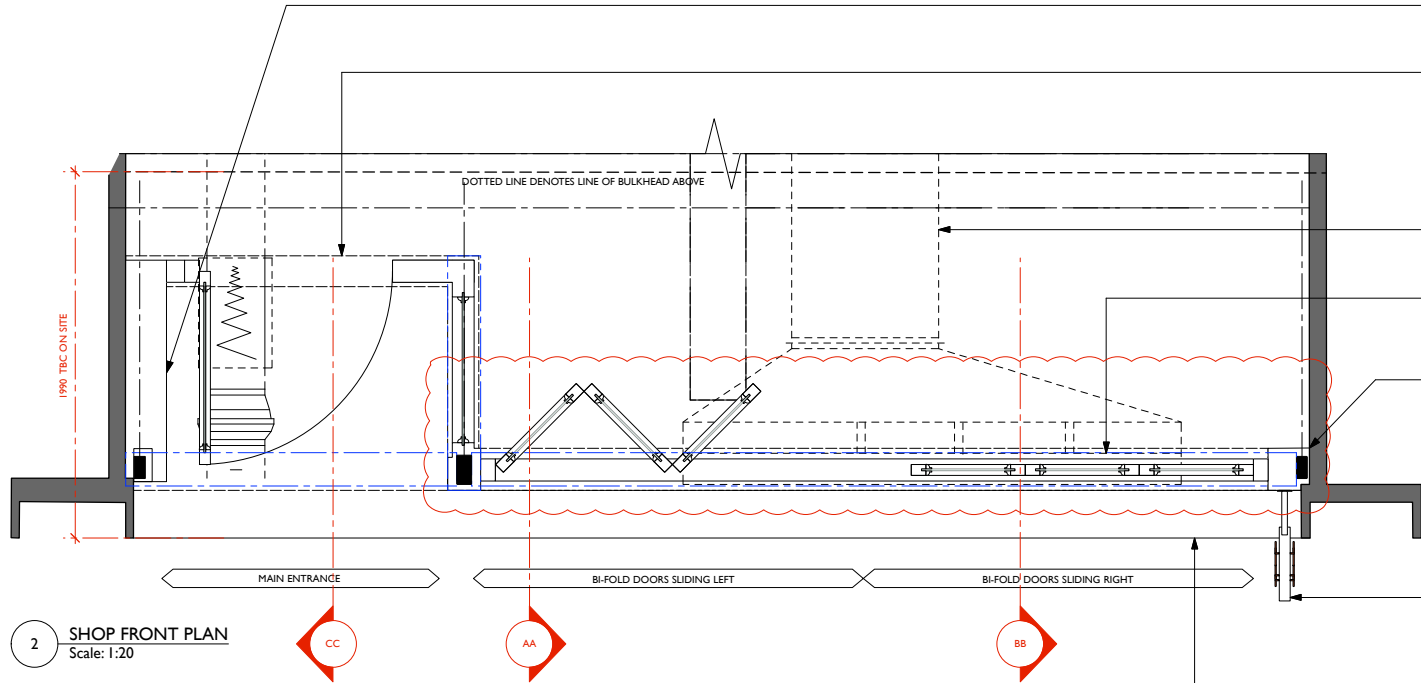
LANDLORDS SURROUND DETAIL

RAISED AND FIELDED STYLE DETAIL TO
ALUMINIUM LOWER LEVEL OF BIFOLD
DOOR SET.



BLACKENED STEEL KICK
PLATE TO ENTRANCE
DOOR. REFER TO DOOR
SCHEDULE 059_502

1 SHOP FRONT ELEVATION
Scale: 1:20



SIDE RETURN TO BE BUILT OUT TO
CONCEAL NEW STRUCTURAL FRAME.
TO BE RAISED AND FIELDED STYLE
ALUMINIUM DETAIL

RECESSED ENTRANCE. 1050 WIDTH
GLAZED DOOR.

HIGH LEVEL DUCT WORK TO TERMINATE
AT SHOPFRONT HIGH LEVEL

GLAZED BI-FOLD DOORS. X2 NO SETS,
REFER TO ELEVATION

NEW RHS POSTS TO SIT WITHIN
ALUMINIUM FRAMEWORK, TO SUPPORT
BIFOLD DOORS. REFER TO ENGINEERS
LATEST DRAWING

ILLUMINATED PORJECTING SIGNAGE.
REFER TO DWG 059_374

LINE OF LANDLORDS SURROUND DETAIL

2 SHOP FRONT PLAN
Scale: 1:20

KEY - WALL FINISHES	
	ZELLIGE OFF WHITE TILES - MIX: RANDOM MIX OF: 1066, 1018, 1019 100MM X 100MM MOSAIC DEL SUR / ZELLIGE TILE / info@articlestudio.com GROUT LINES 2.3 mm / MAPEI GROUT COLOUR: ANTHRACITE
	SHOPFRONT PAINT: LOW SHEEN SPRAY FINISH TO MATCH DULUX TRADE 300Y 88/014 "WHITE CHIFFON" FOR ALUMINIUM SUBSTRATE.
	EXTERNAL ROUGH PLASTER FINISH OFF WHITE EXTERNAL GRADE ROUGH PLASTER IN BESPOKE COLOUR TO MATCH FASCIA BOARD FINISH IN SHOREDITCH CONTRACTOR TO ADVICE ON SUITABLE SUBSTRATE

N.B TO BE READ IN CONJUNCTION WITH
STRUCTSOL STRUCTURAL DESIGN
DRAWINGS. / ALL DIMENSIONS TBC ON SITE
/CONTRACTOR TO PROVIDE SHOP DRAWING
FOR ADS AND CLIENT APPROVAL

CONTRACTOR TO ENSURE SUITABLE
WEATHERING DETAILS TO SHOPFRONT

THIS DRAWING IS THE PROPERTY OF ARTICLE DESIGN STUDIO LTD. COPYRIGHT IS RESERVED BY
THEM AND THE DRAWING IS ISSUED ON THE CONDITION THAT IT IS NOT COPIED, REPRODUCED,
RETAINED OR DISCLOSED TO ANY UNAUTHORISED PERSON, EITHER WHOLLY OR IN PART
WITHOUT CONSENT IN WRITING OF ARTICLE DESIGN STUDIO LTD.

DO NOT SCALE THIS DRAWING. FIGURED DIMENSIONS ONLY ARE TO BE USED IN PREFERENCE TO
SMALL SCALE DRAWINGS. ALL DIMENSIONS ARE TO BE CHECKED ON SITE BEFORE ANY WORK
PROCEEDS. ANY ERRORS OR OMISSIONS ARE TO BE REPORTED TO THE DESIGNER. F IN DOUBT
ASK.

THE CONTRACTOR IS TO PROVIDE FULL SIZED SETTING OUT DRAWINGS BASED ON
INFORMATION CONTAINED IN THIS DRAWING FOR THE DESIGNER'S APPROVAL PRIOR TO
COMMENCING MANUFACTURE.

THIS DRAWING IS TO BE READ IN CONJUNCTION WITH ALL THE RELEVANT CONSULTANTS
AND/OR SPECIALISTS DRAWINGS OR DOCUMENTS AND ANY DISCREPANCIES OR VARIATIONS ARE
TO BE NOTIFIED TO THE DESIGNER BEFORE THE AFFECTED WORK COMMENCES.

REVISIONS:	
CODE:	DATE:
A	21.06.18
B	27.06.18
C	11.07.18
D	17.07.18
DESCRIPTION:	
MORE DETAIL ADDED TO DRAWING	
DOORS REDUCED TO TWO SUPPORT IN THE MIDDLE OMITTED	
SHOPFRONT CHANGED TO ALUMINIUM	
TEXT CHANGED AND DESCRIPTION OF WF14	

ARTICLE
DESIGN
STUDIO
ARTICLE DESIGN STUDIO LTD
STUDIO 4A, PAGNELL STREET
LONDON
SE14 6AY
Tel: +44 (0) 208 378 6629

PROJECT NO: 059
CLIENT/PROJECT: BRINDISA BATTERSEA

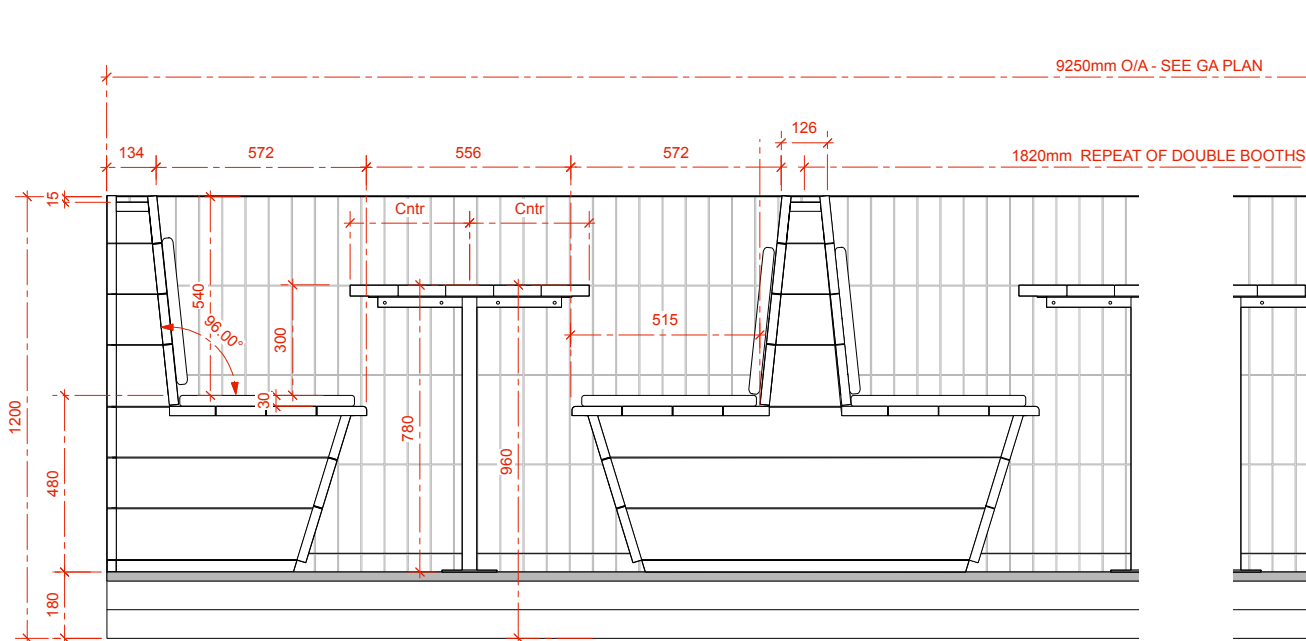
SITE ADDRESS:
UNIT 25
BATTSEA POWER STATION

DATE: 08.06.2018
DRAWN: GF
CHECKED: KJM
SCALE: Scale

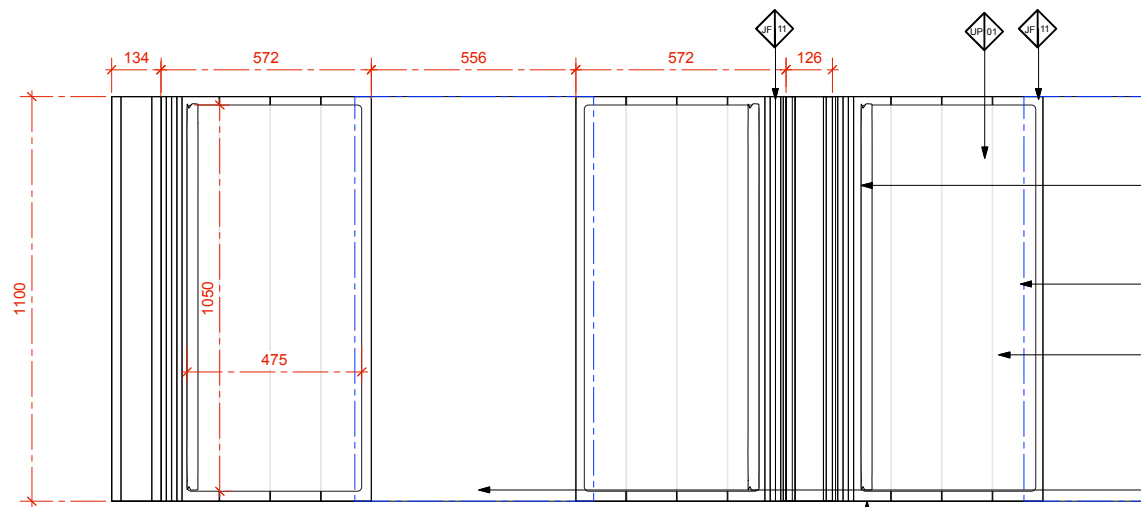
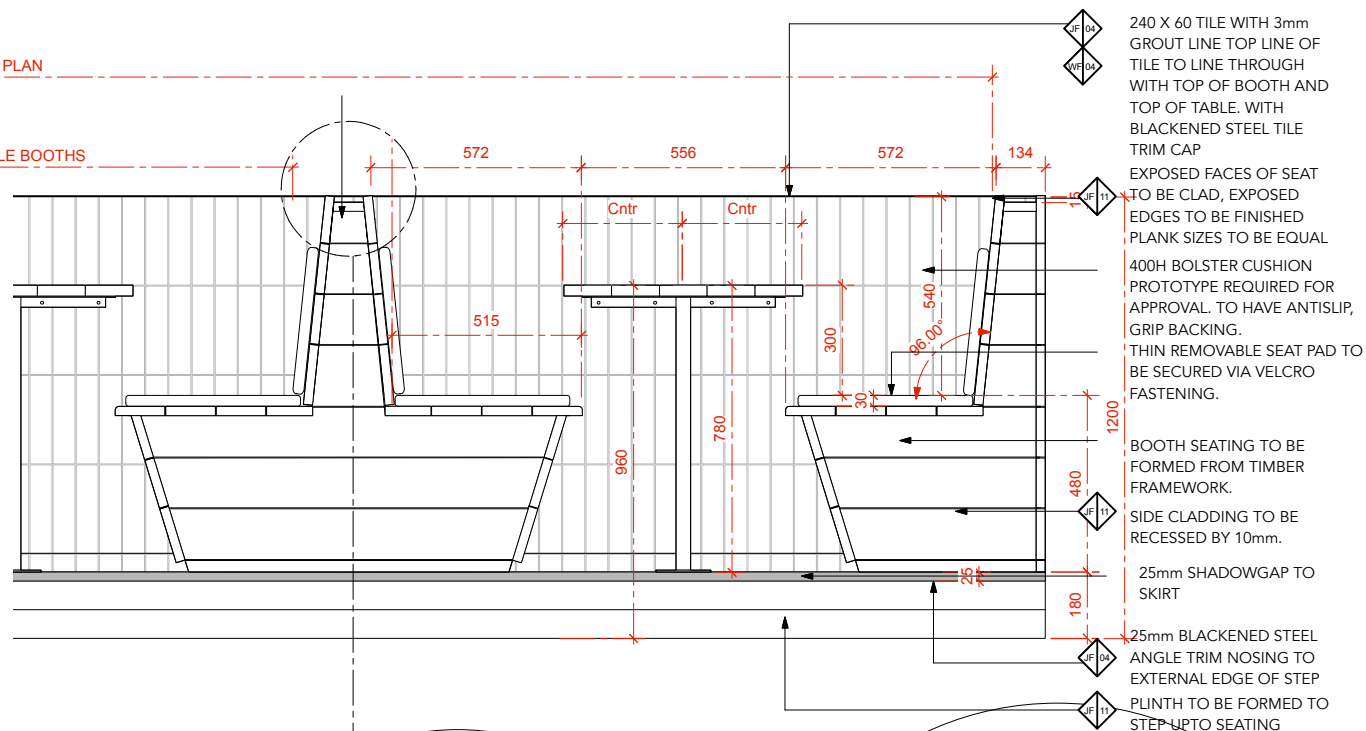
TITLE:
SHOPFRONT ELEVATION

STATUS:
DETAIL DESIGN

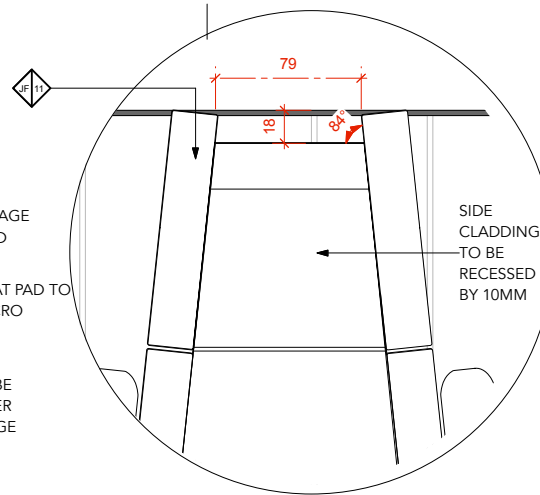
DWG. NO: 059-210
REV: D



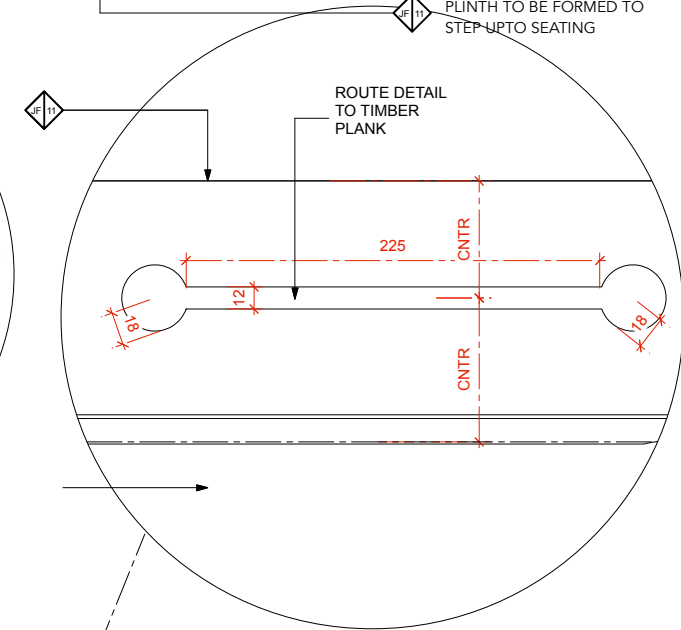
1 BOOTH SIDE ELEVATION
Scale: 1:10



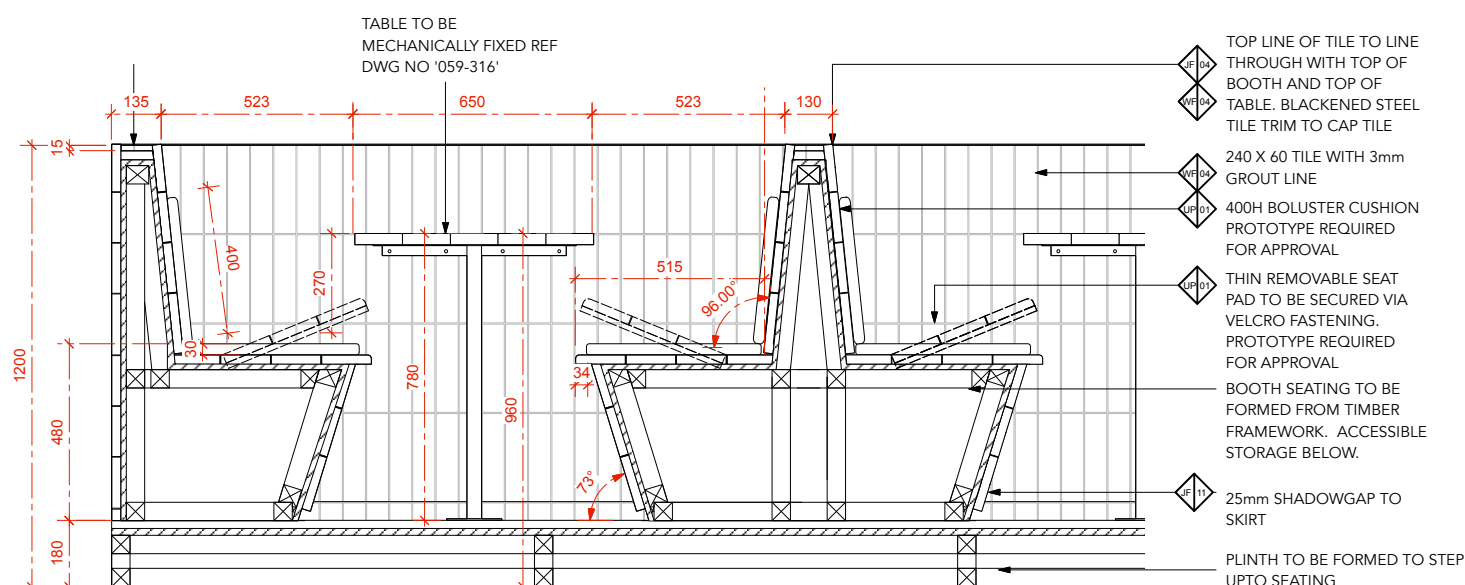
2 BOOTH PLAN VIEW
Scale: 1:10



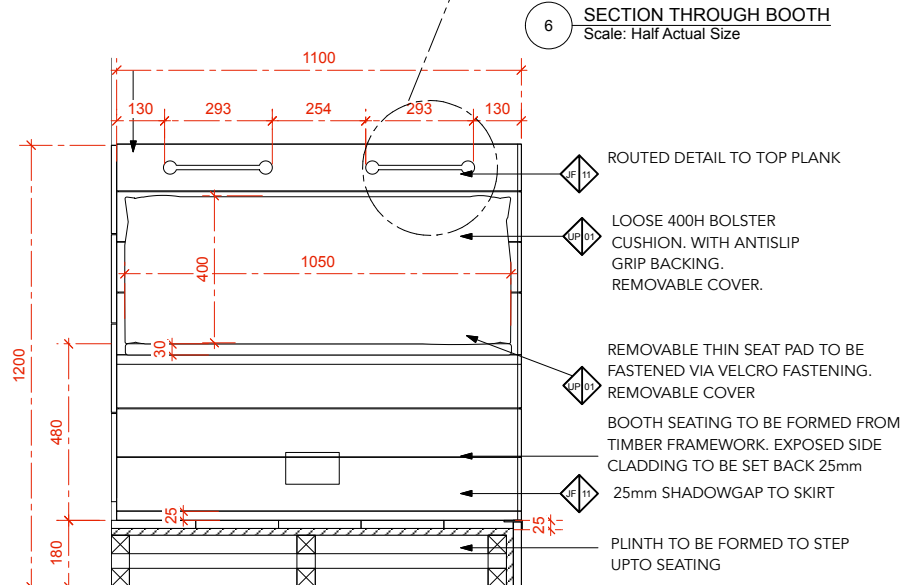
5 TOP CAPPING DETAIL
Scale: Half Actual Size



6 SECTION THROUGH BOOTH
Scale: Half Actual Size

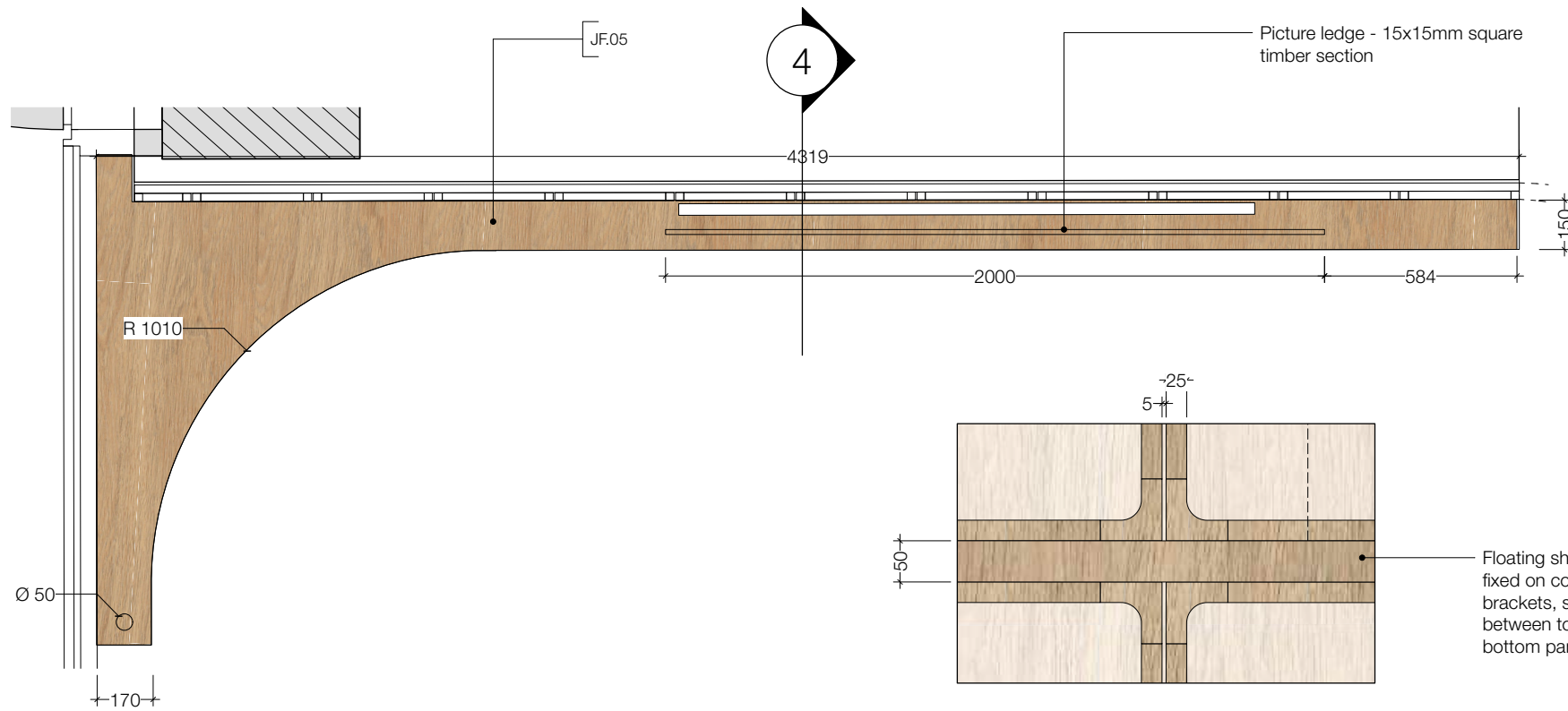


3 SECTION THROUGH BOOTH
Scale: 1:10



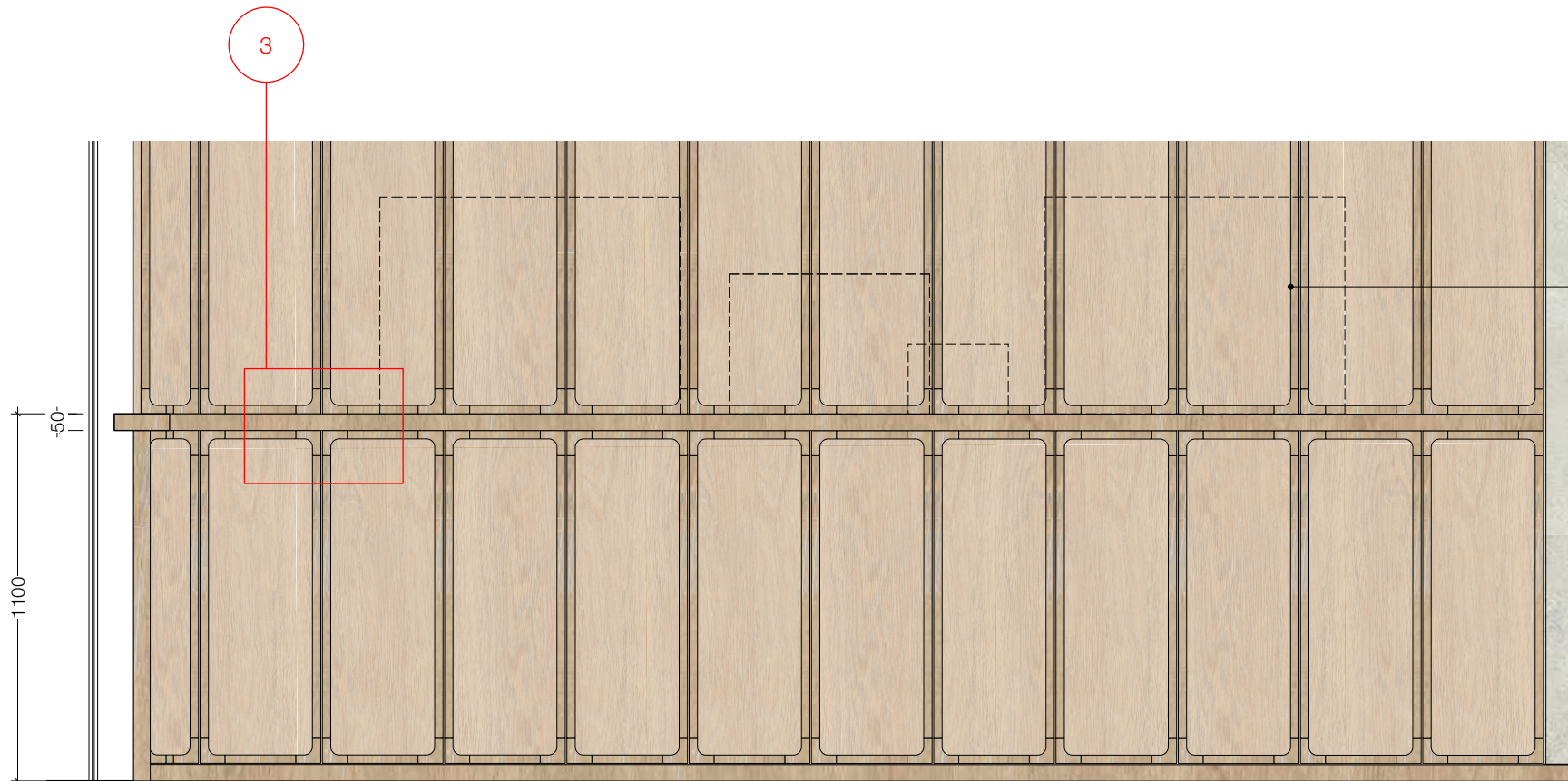
4 BOOTH FRONT ELEVATION
Scale: 1:10

KEY - JOINERY FINISHES																																																							
	BLACKENED STEEL: MATT LACQUER FINISH. TO BE WEATHERPROOF FOR EXTERNAL USE. TO BE FULLY SEALED TO PREVENT RUSTING AND WATER DAMAGE. CONTRACTOR TO PROVIDE CONTROL SAMPLE FOR APPROVAL																																																						
	CHARACTER OAK WITH BLACK VEIN CLEAR MATT SEALANT CONTRACTOR TO PROVIDE SAMPLE TO MATCH ADS CONTROL SAMPLE.																																																						
KEY - WALL FINISHES																																																							
	PAINTED TEXTURE PLASTER FINISH: TEXTURED RENDER WALL FINISH AS PER SCHO SITE PAINTED IN DULUX MATT EMULSION TO MATCH LITTLE GREENE "HOLLYHOCK"25 CONTRACTOR TO PROVIDE SAMPLE FOR ADS APPROVAL																																																						
	OFF WHITE TEXTURED TILE: ORIGINAL SAND BUSTIC BRICK BY DESIGN WORKS TILES / HTTP://WWW.DESIGNWORKSTILES.COM/ 240MM X 40MM X 12 MM VERTICAL LINEAR LAY 2-3 MM GROUT LINE - MAPEI ANTHRACITE GROUT LEAD TIME 10 DAYS																																																						
KEY - UPHOLSTERY FINISHES																																																							
	TAN LEATHER: CREST LEATHER Michael.Tetlak@crestleather.com SHELLEY SPICE STAIN RESISTENT TREATMENT APPLIED																																																						
<div>PROTOTYPE REQUIRED FOR APPROVAL OF CUSHIONS.</div> <div></div> <div>BOLSTER CUSHION REFERENCE IMAGE</div> <div><p>THIS DRAWING IS THE PROPERTY OF ARTICLE DESIGN STUDIO LTD. COPYRIGHT IS RESERVED BY THEM AND THE DRAWING IS ISSUED ON THE CONDITION THAT IT IS NOT COPIED, REPRODUCED, RETAINED OR DISCLOSED TO ANY UNAUTHORISED PERSON, EITHER WHOLLY OR IN PART WITHOUT CONSENT IN WRITING OF ARTICLE DESIGN STUDIO LTD.</p><p>DO NOT SCALE THIS DRAWING. FIGURED DIMENSIONS ONLY ARE TO BE USED IN PREFERENCE TO SMALL SCALE DRAWINGS. ALL DIMENSIONS ARE TO BE CHECKED ON SITE BEFORE ANY WORK PROCEEDS. ANY ERRORS OR OMISSIONS ARE TO BE REPORTED TO THE DESIGNER. IF IN DOUBT ASK.</p><p>THE CONTRACTOR IS TO PROVIDE FULL SIZED SETTING OUT DRAWINGS BASED ON INFORMATION CONTAINED IN THIS DRAWING FOR THE DESIGNER'S APPROVAL PRIOR TO COMMENCING MANUFACTURE.</p><p>THIS DRAWING IS TO BE READ IN CONJUNCTION WITH ALL THE RELEVANT CONSULTANTS AND/OR SPECIALISTS DRAWINGS OR DOCUMENTS AND ANY DISCREPANCIES OR VARIATIONS ARE TO BE NOTIFIED TO THE DESIGNER BEFORE THE AFFECTED WORK COMMENCES.</p></div> <div>REVISIONS:</div> <table><thead><tr><th>CODE:</th><th>DATE:</th><th>DESCRIPTION:</th></tr></thead><tbody><tr><td>A</td><td>20.07.18</td><td>WINE STORE DOOR AND AWC DOOR DESIGN UPDATES</td></tr></tbody></table> <div><div>ARTICLE</div><div>DESIGN STUDIO</div><div>ARTICLE DESIGN STUDIO LTD STUDIO 4A, PAGNELL STREET LONDON SE14 6AY Tel: +44 (0) 208 378 6629</div></div> <table><tr><td colspan="2">PROJECT NO:</td><td colspan="2">CLIENT/PROJECT:</td></tr><tr><td colspan="2">059</td><td colspan="2">BRINDISA BATTERSEA</td></tr><tr><td colspan="4">SITE ADDRESS:</td></tr><tr><td colspan="4">UNIT 25 BATTERSEA POWER STATION</td></tr><tr><td>DATE:</td><td>DRAWN:</td><td>CHECKED:</td><td>SCALE:</td></tr><tr><td>12.06.18</td><td>JC</td><td>KJM</td><td>AS SHOWN</td></tr><tr><td colspan="4">TITLE:</td></tr><tr><td colspan="4">BOOTH SEATS</td></tr><tr><td colspan="4">STATUS:</td></tr><tr><td colspan="4">DETAIL DESIGN</td></tr><tr><td colspan="2">DWG. NO:</td><td colspan="2">REV:</td></tr><tr><td colspan="2">059-315</td><td colspan="2">A</td></tr></table>		CODE:	DATE:	DESCRIPTION:	A	20.07.18	WINE STORE DOOR AND AWC DOOR DESIGN UPDATES	PROJECT NO:		CLIENT/PROJECT:		059		BRINDISA BATTERSEA		SITE ADDRESS:				UNIT 25 BATTERSEA POWER STATION				DATE:	DRAWN:	CHECKED:	SCALE:	12.06.18	JC	KJM	AS SHOWN	TITLE:				BOOTH SEATS				STATUS:				DETAIL DESIGN				DWG. NO:		REV:		059-315		A	
CODE:	DATE:	DESCRIPTION:																																																					
A	20.07.18	WINE STORE DOOR AND AWC DOOR DESIGN UPDATES																																																					
PROJECT NO:		CLIENT/PROJECT:																																																					
059		BRINDISA BATTERSEA																																																					
SITE ADDRESS:																																																							
UNIT 25 BATTERSEA POWER STATION																																																							
DATE:	DRAWN:	CHECKED:	SCALE:																																																				
12.06.18	JC	KJM	AS SHOWN																																																				
TITLE:																																																							
BOOTH SEATS																																																							
STATUS:																																																							
DETAIL DESIGN																																																							
DWG. NO:		REV:																																																					
059-315		A																																																					

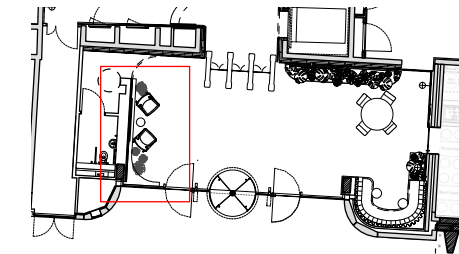


1 PLAN
1:20 @ A3

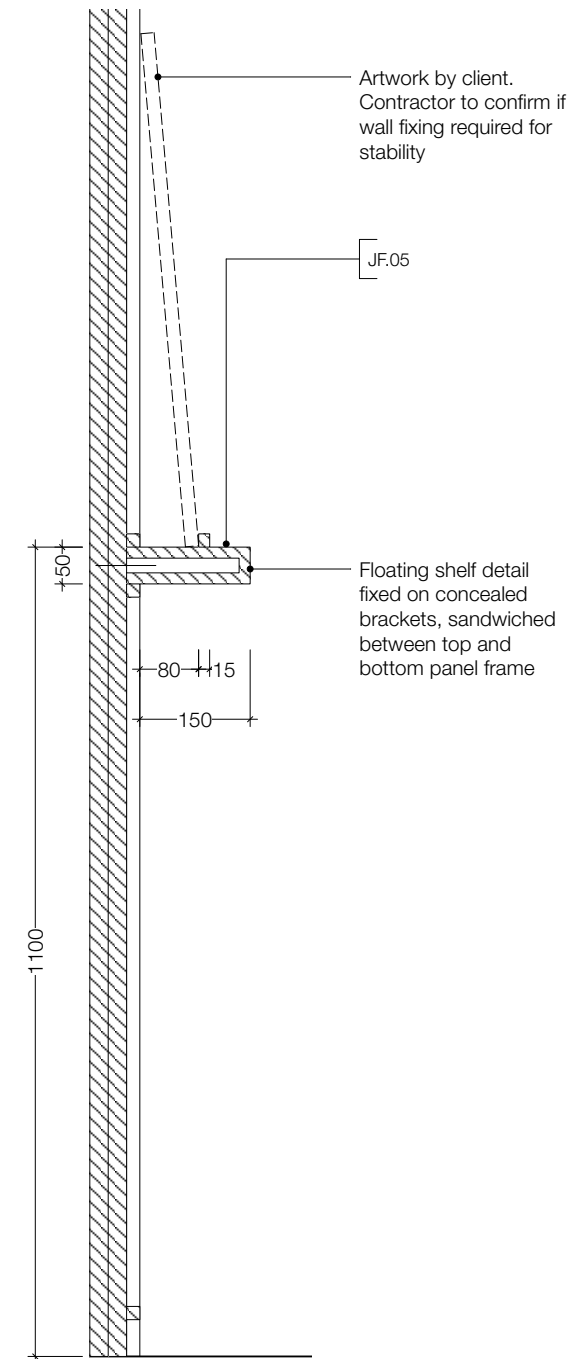
3 DETAIL
1:8 @ A3



2 ELEVATION
1:20 @ A3



KEY PLAN (NTS)



4 SECTION
1:10 @ A3

GENERAL NOTES.

All dimensions to be checked on site prior to commencement of any works, and/or preparation of any shop drawings.

Sizes of and dimensions to any structural elements are indicative only. See structural engineers drawings for actual sizes / dimensions.

Sizes of and dimensions to any service elements are indicative only. See service engineers drawings for actual sizes and dimensions.

This drawing to be read in conjunction with all other Architect's drawings, specifications and other Consultants' information.

All proprietary systems shown on this drawing are to be installed strictly in accordance with the Manufacturers/Suppliers recommended details.

Any discrepancies between information shown on this drawing and any other contract information or manufacturers/suppliers recommendations is to be brought to the attention of the Architect

DO NOT SCALE FROM THIS DRAWING.

NOTES.

ALL DIMENSIONS TO BE CONFIRMED ON SITE!

NOTE: DETAILS TO BE READ IN CONJUNCTION WITH INTERNAL ELEVATIONS

T1 TENDER SUBMISSION 12.11.21

REVISION DATE

Feix&Merlin Architects
UNIT C2 - BLCK, The Bussey Building
133 Copeland Road
www.feixandmerlin.com

CLIENT BRITISH LAND

PROJECT YORK HOUSE

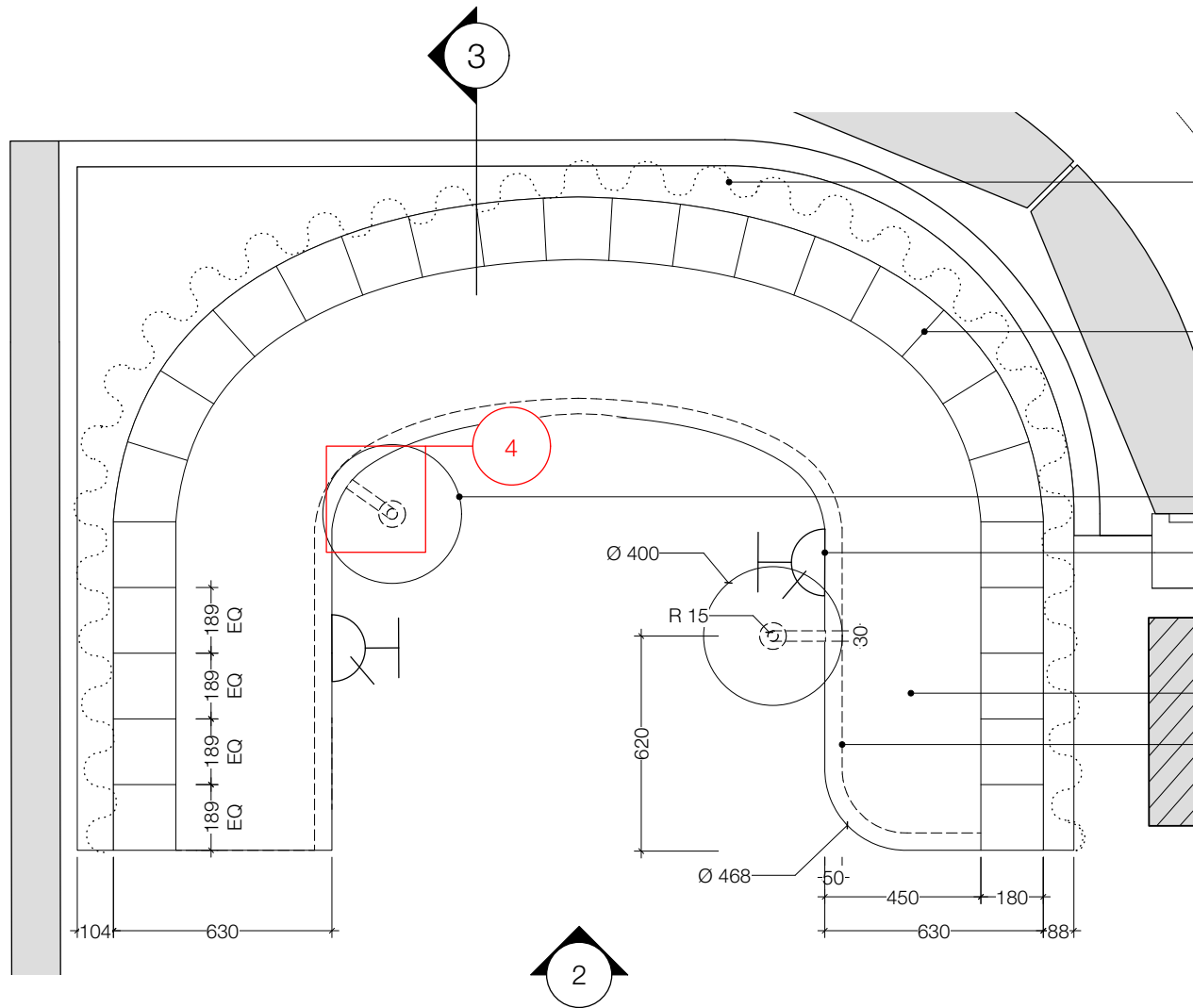
DRAWING **JOINERY DETAILS**
J.05 PICTURE LEDGE

SCALE 1:20 @ A3

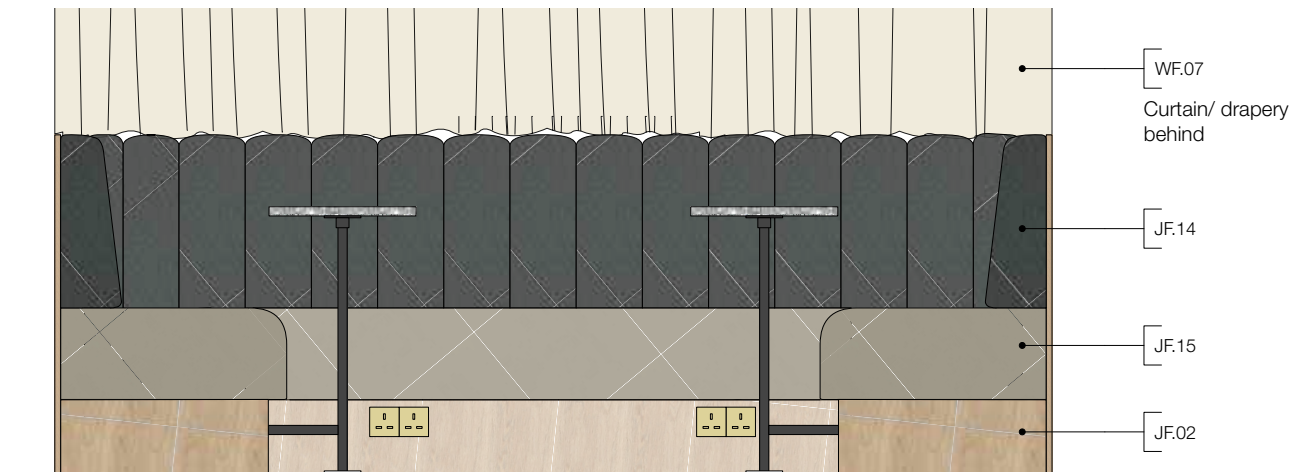
DATE NOV 21 DRAWN BY F&M

DWG No. **0401-609-JD** REVISION T1

DRAWING STATUS **TENDER**



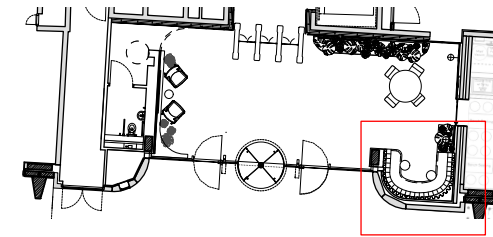
1 PLAN
1:20 @ A3



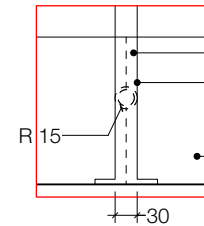
2 ELEVATION
1:20 @ A3



SOCKET SPEC:
Soho Lighting Brushed Brass 2 Gang USB A+C Socket (13A Socket + 2 USB Ports A+C 3.1A) Blk Ins Screwless
Flushed face plate to all integrated power sockets.
Or equal equivalent subject to F&M approval.

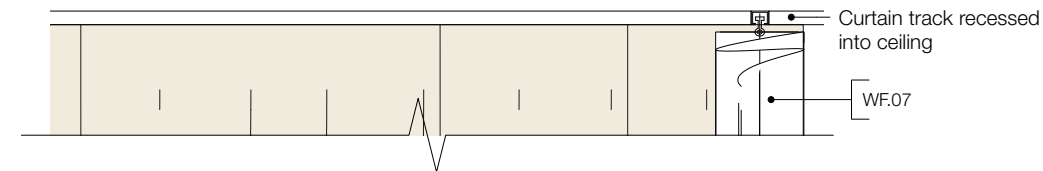


KEY PLAN (NTS)

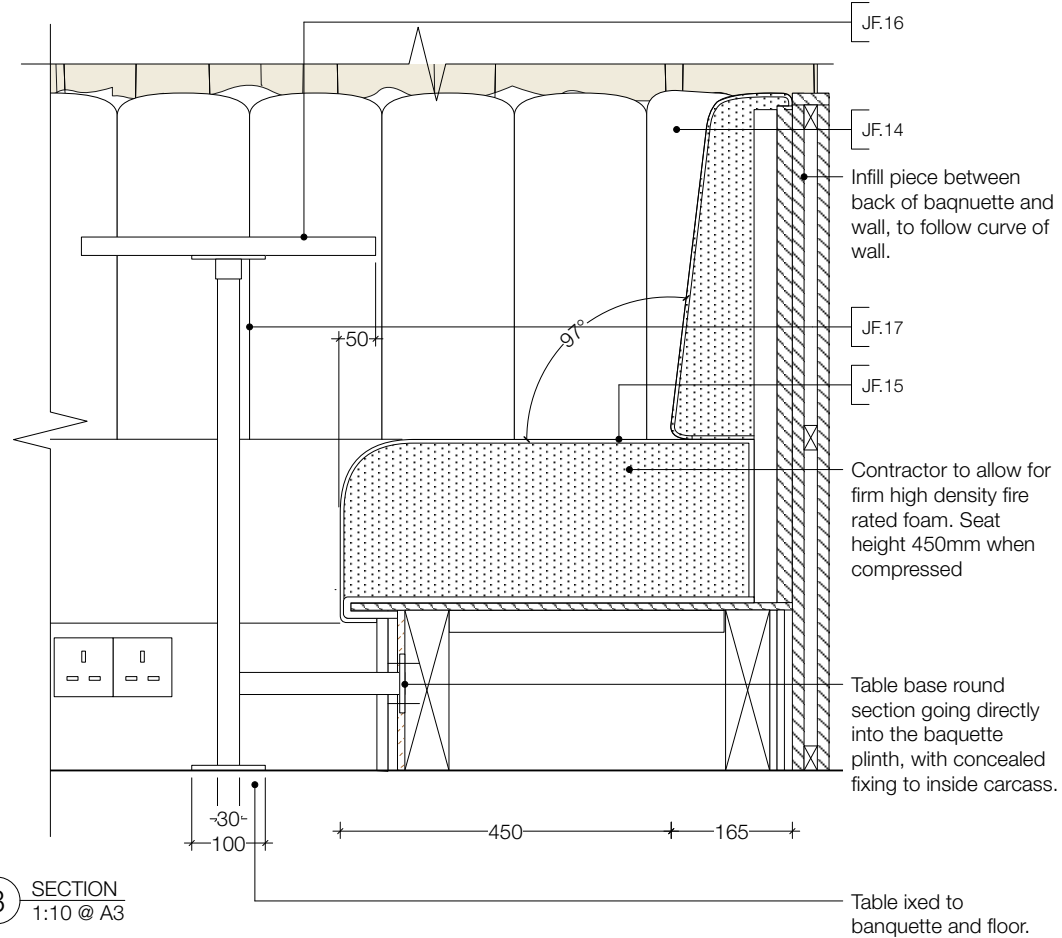


4 DETAIL
1:10 @ A3

Table base round section going directly into the banquette plinth, with hidden fixing to inside carcass.



3 SECTION
1:10 @ A3



GENERAL NOTES.

All dimensions to be checked on site prior to commencement of any works, and/or preparation of any shop drawings.

Sizes of and dimensions to any structural elements are indicative only. See structural engineers drawings for actual sizes / dimensions.

Sizes of and dimensions to any service elements are indicative only. See service engineers drawings for actual sizes and dimensions.

This drawing to be read in conjunction with all other Architect's drawings, specifications and other Consultants' information.

All proprietary systems shown on this drawing are to be installed strictly in accordance with the Manufacturers/Suppliers recommended details.

Any discrepancies between information shown on this drawing and any other contract information or manufacturers/suppliers recommendations is to be brought to the attention of the Architect

DO NOT SCALE FROM THIS DRAWING.

NOTES.

ALL DIMENSIONS TO BE CONFIRMED ON SITE!



FIXED TABLE INSPIRATION -
HIDDEN FIXING TO INSIDE
CARCASS OF BANQUETTE.

NOTE: DETAILS TO BE READ IN CONJUNCTION WITH INTERNAL ELEVATIONS

T1 TENDER SUBMISSION 12.11.21

REVISION DATE

Feix&Merlin Architects
UNIT C2 - BLCK, The Bussey Building
133 Copeland Road
www.feixandmerlin.com

CLIENT BRITISH LAND

PROJECT YORK HOUSE

DRAWING **JOINERY DETAILS**
J.08 CURVED BANQUETTE

SCALE 1:20 @ A3

DATE NOV 21 DRAWN BY F&M

DWG No. **0401-612-JD** REVISION T1

DRAWING STATUS **TENDER**

SELECTED COMPLETE PROJECTS

The Shepherd | Disney +

Designer: John Beard

- Full survey of locations, produced elevations and plans, and then did Sketchup models as a base for Photoshop visuals.
- Technical drawings for the joinery elements like the bar and back bar in the second page.
- Art direction of "Freddie's house" sets interior and exterior



Before



After. Officer's Mess new entrance design and set for snow ball fight



New entrance - Sketchup



Calm winter evening before take off



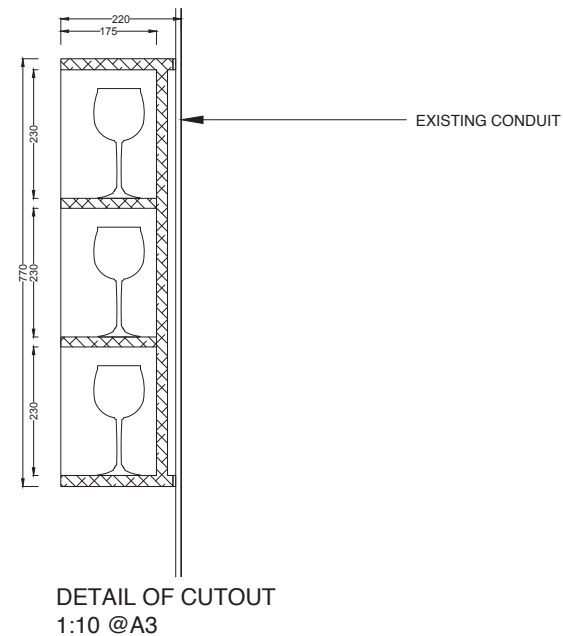
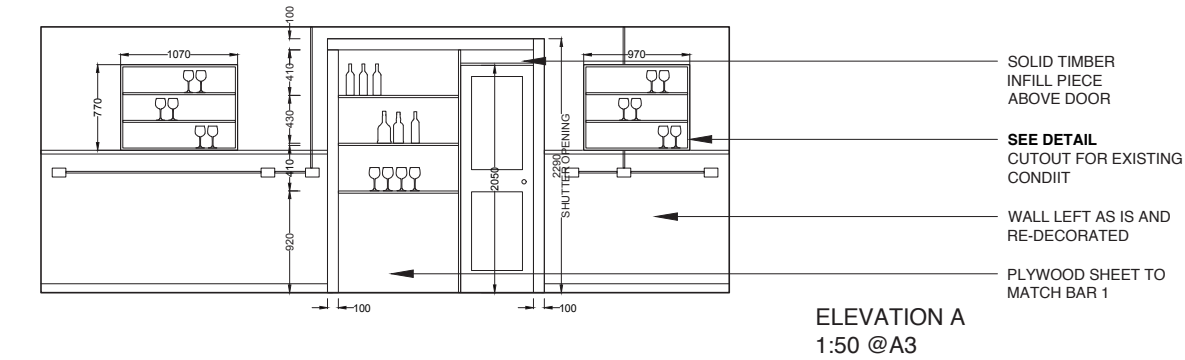
Idyllic Christmas setting for Freddy's (main character) house



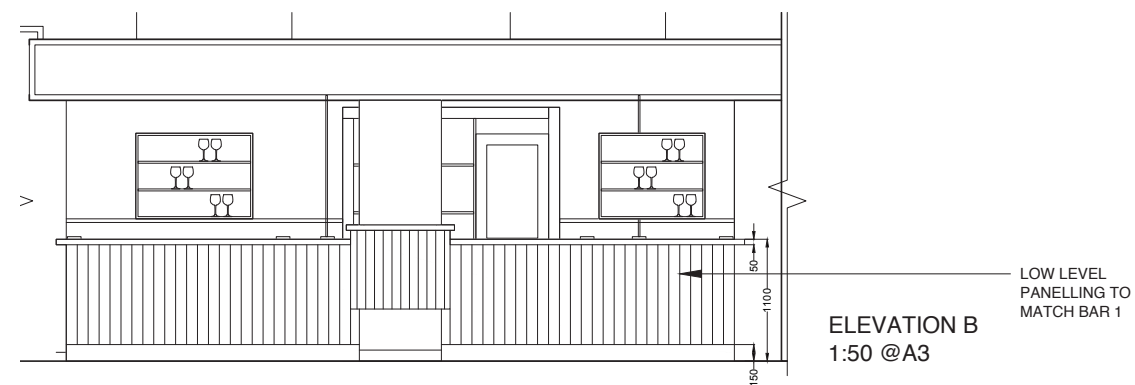
Sketchup model of space

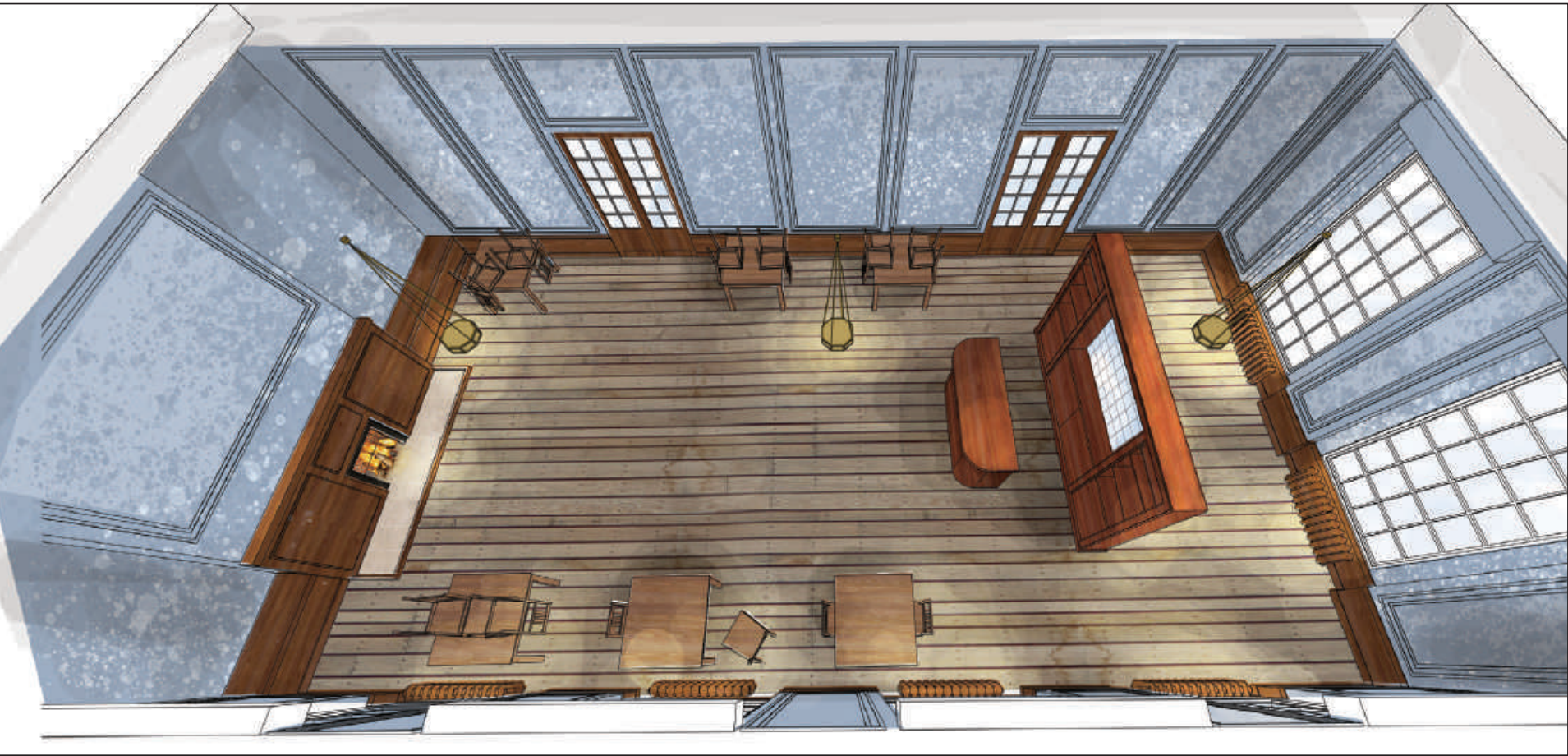


Main Christmas party set - Sketchup/ Photoshop

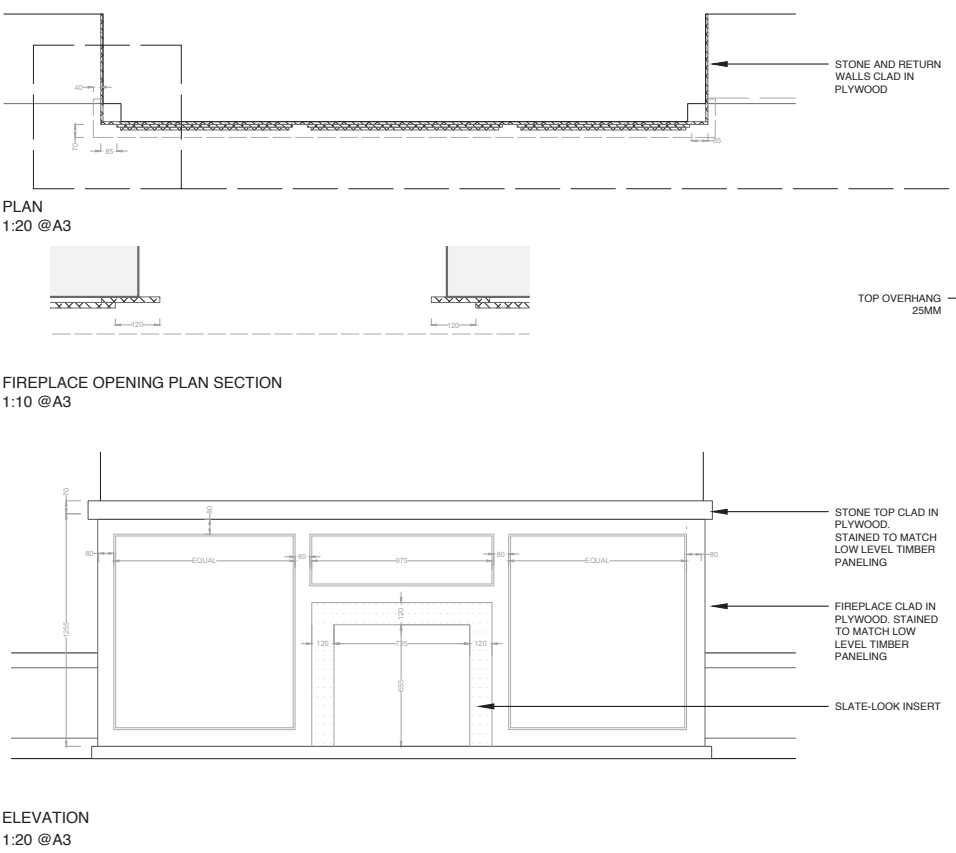


Detail for new bar and back bar (to the left on visual above)

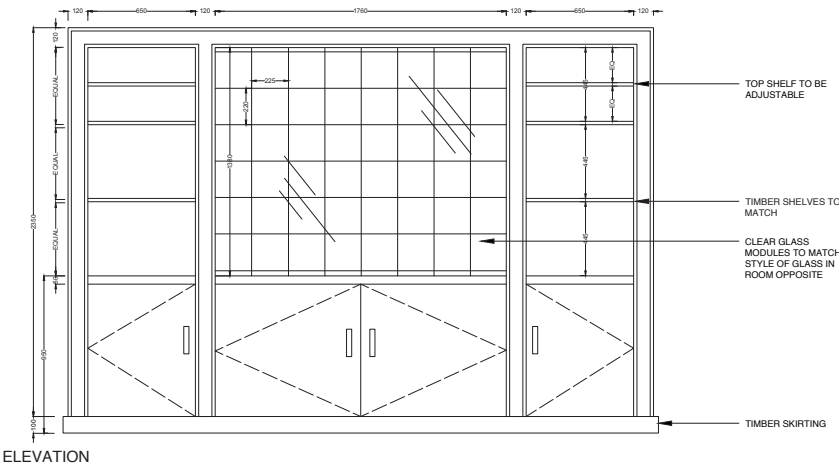
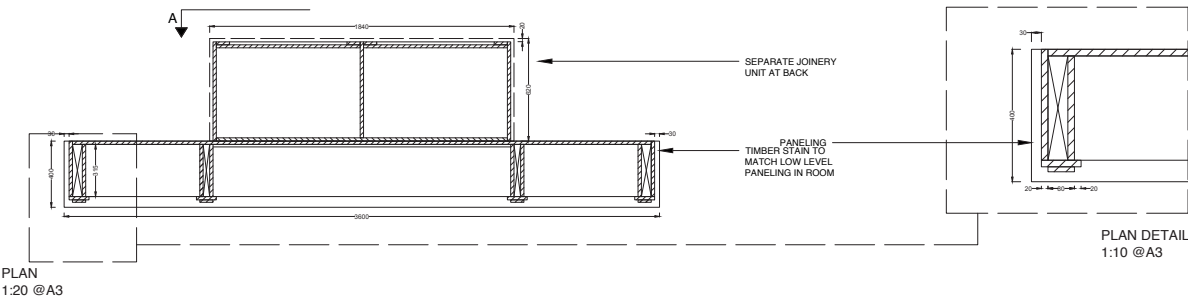




Abandoned officer's mess - Sketchup/ Photoshop



Detail for fire place



Detail for free standing back bar

Tapas Brindisa

Tapas restaurant in Battersea

- Prepared concept presentation to encapsulate the authentic, uncomplicated and warm spaces we are looking to design.
- Developed layout of restaurant, elevations and joinery details.
- Produced visuals for client meetings.
- Led the project on site, collaborating with builders, suppliers, the council and the clients.

Designed a shopfront inspired by traditional Spanish restaurants with bi-folding doors that invite the outside in.



Specified honest and traditional materials like terracotta, zellige tiles and rough plaster finish for interior walls.





Kitchen pass at the back of the restaurant was designed to reflect light and be a feature in the space



Visual of bar showing materials and lighting



Inspiration for mood and materiality. Simple shapes, concrete bar top, warm lighting, rattan stools and black stained chairs



Elevation A



Elevation B



Elevation C



Brindisa Battersea

Completed Photos

Living by “Scape”

Private studio apartments with shared social spaces in Guildford

- Sourced sustainable materials like timber and resin terrazzo, bamboo worktops, wool furniture upholstery, reclaimed timber flooring, non toxic MDF (valchromat)
- Construction drawings for joinery pieces and liaising with architects on layouts
- Shedules and updating budget
- Specified furniture and light fittings, accessories and rugs



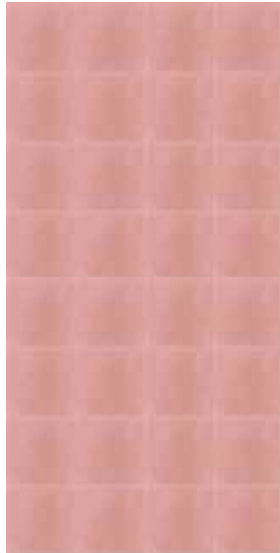
KITCHEN WALL
PAINT FINISH



KITCHEN WALL
TILE



KITCHEN JOINERY
MATERIAL



KITCHEN FLOOR
TILE



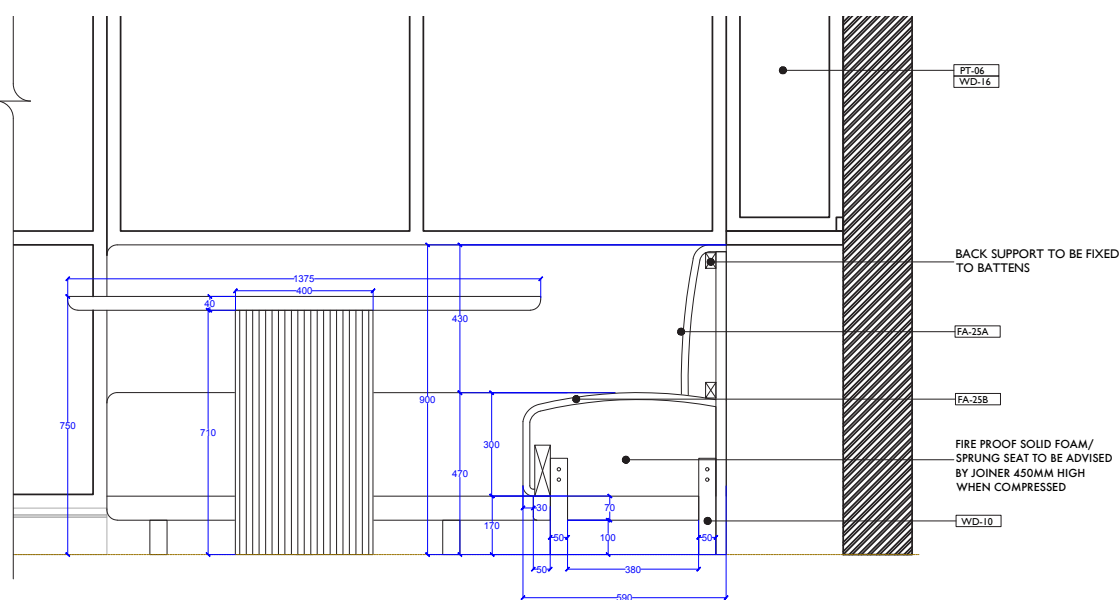
KITCHEN ISLAND COUN-
TER TOP TILE



BINS AREA
COUNTER TOP



CO WORKING PRINTER
JOINERY MATERIAL



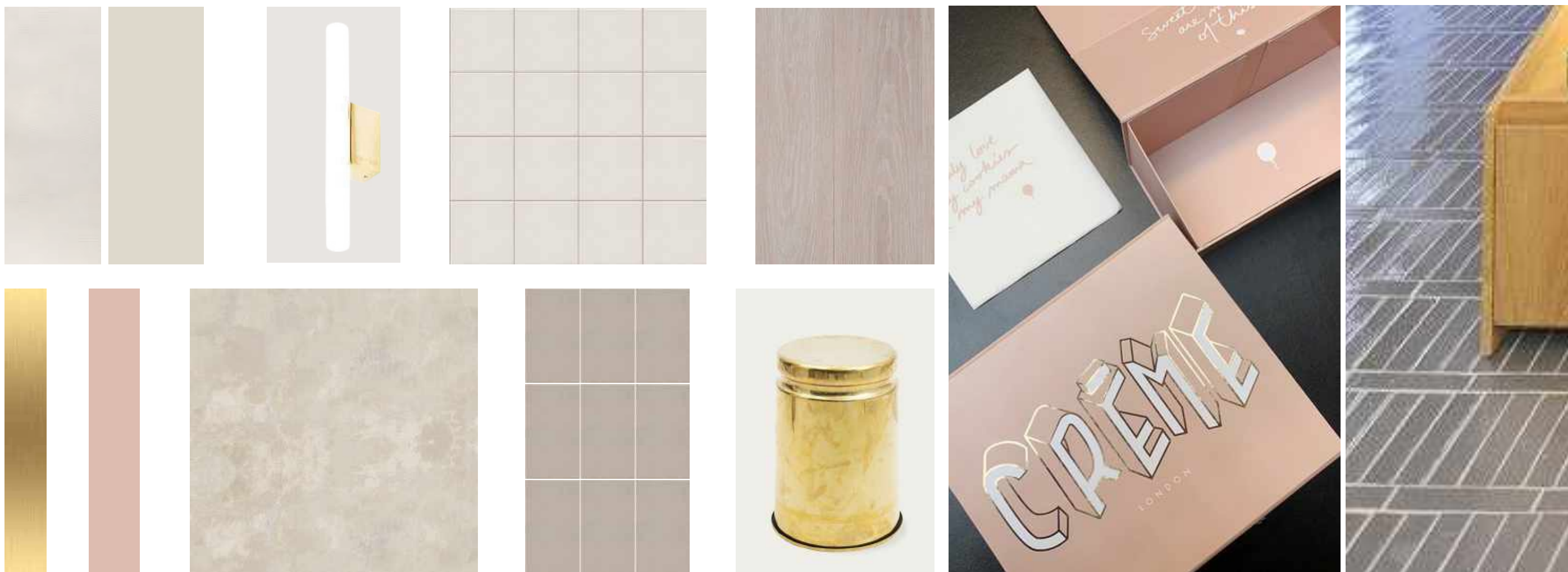
CRÈME

Cookie bakery and shop in Soho

- Prepared concept presentation for client of clean and contemporary interiors which allow the product to shine
- Did in-depth colour exploration and developed Sketchup/ Photoshop visuals showing various different options
- Worked with kitchen and building contractors to accommodate the specific operational needs of clients

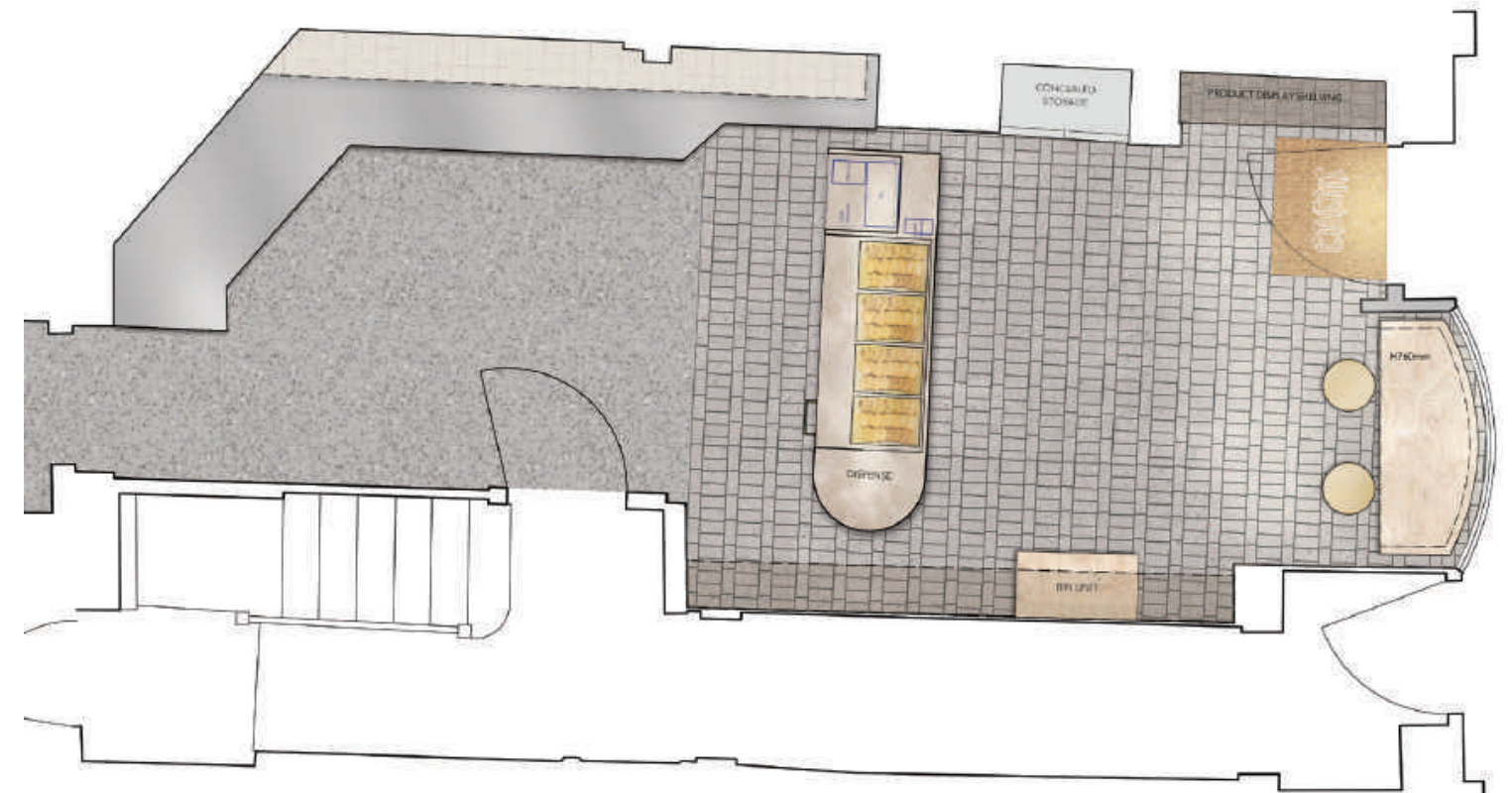


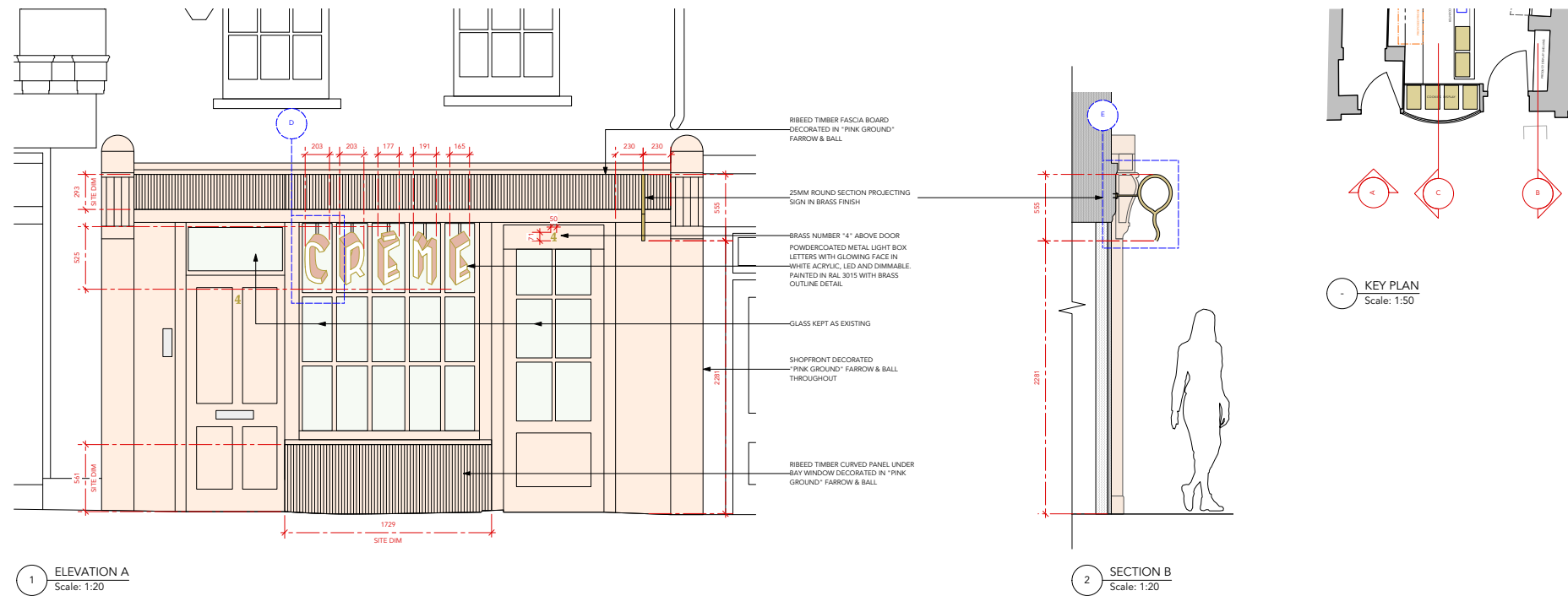
Concept images of natural and hard wearing materials .
To hold an expansive beauty which allows the finer textures of the product sing within the displays.



Selection of materials, furniture and lighting to complement the branded packaging.

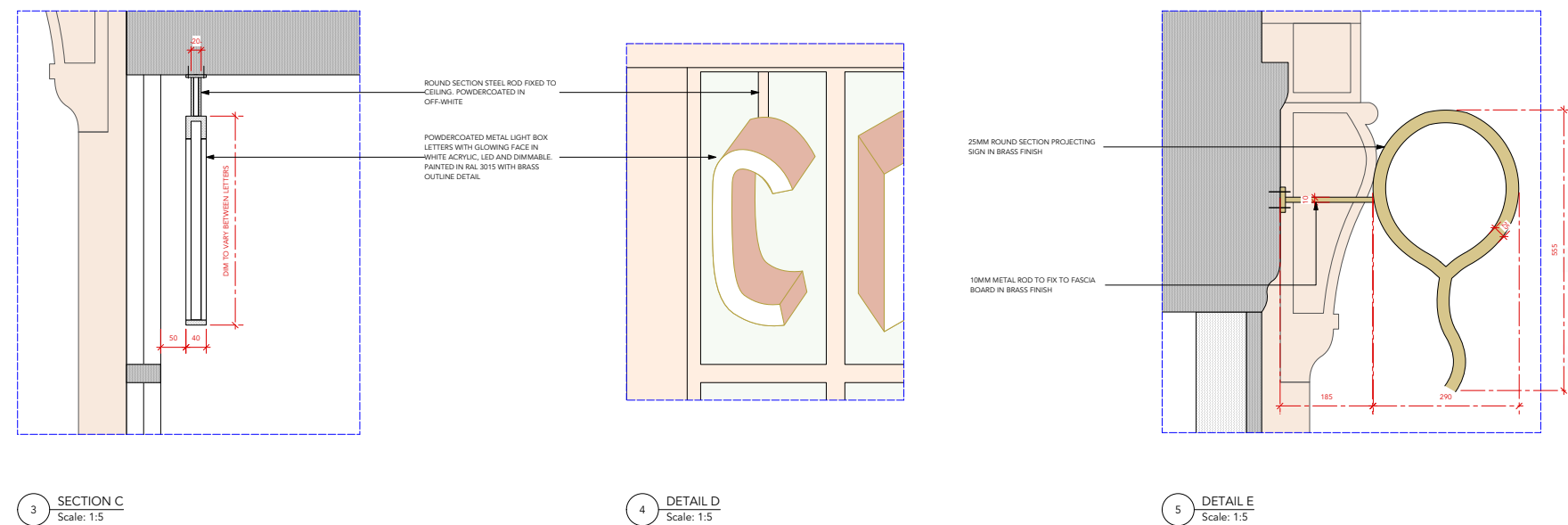
2 tone lime wash on walls while keeping existing traditional panelling as a feature.
Sleek concrete counter with bespoke brass trays.
Bespoke lighting with signage to advertise product.





Modern and sleek projecting sign, inspired by branding

Internally illuminated bespoke signage to fit in each window pane.



Bench OPT 3

Bench OPT 2

Bench OPT 1



Crème

Shopfront



Colicci Storey's Gate

Cafe in a listed building in St James's Park

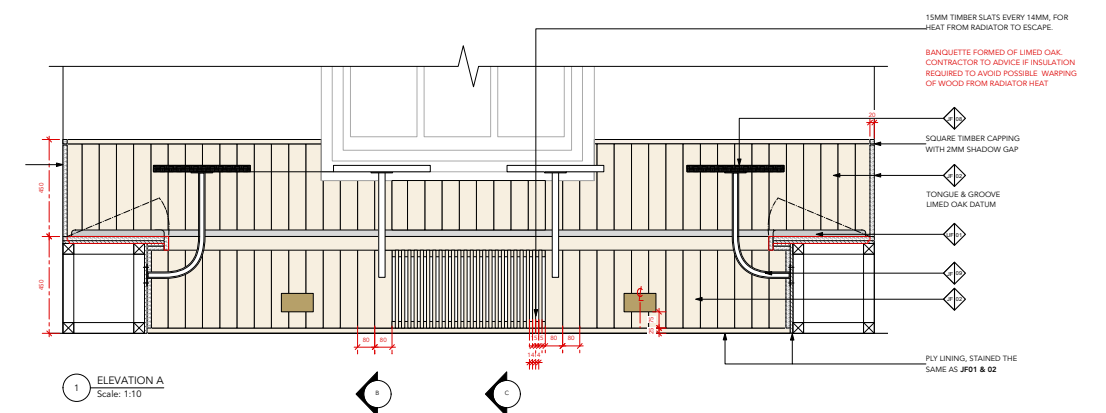
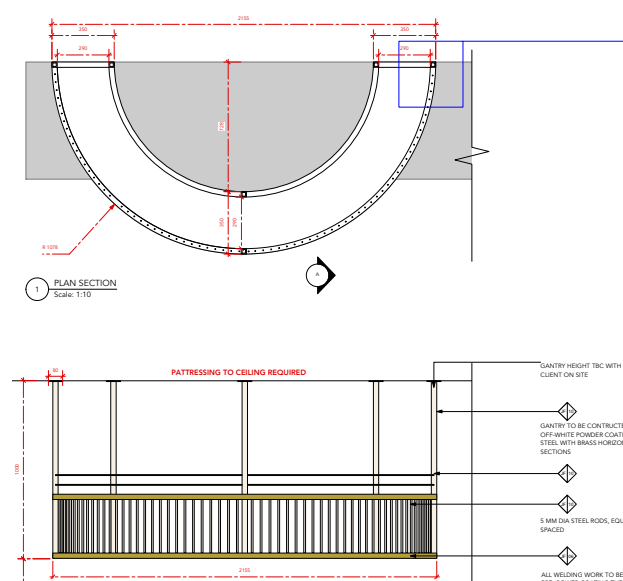
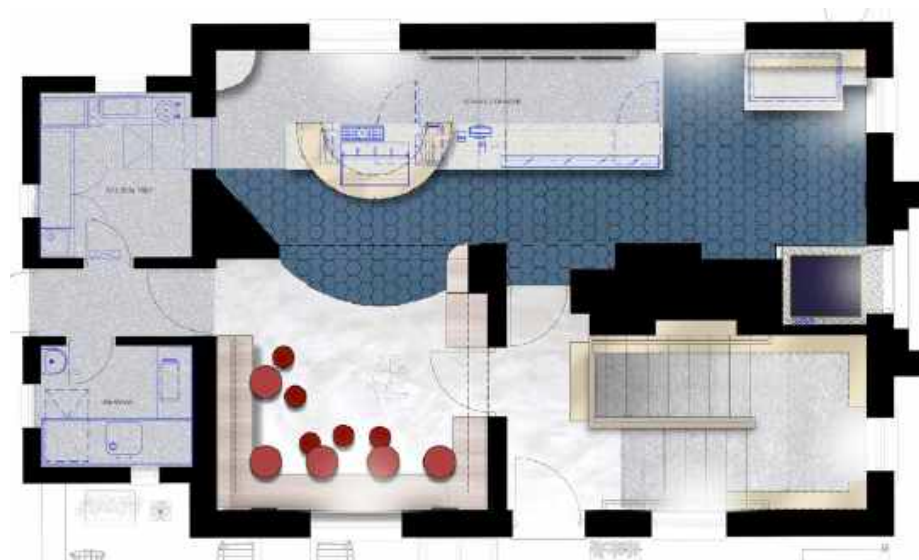
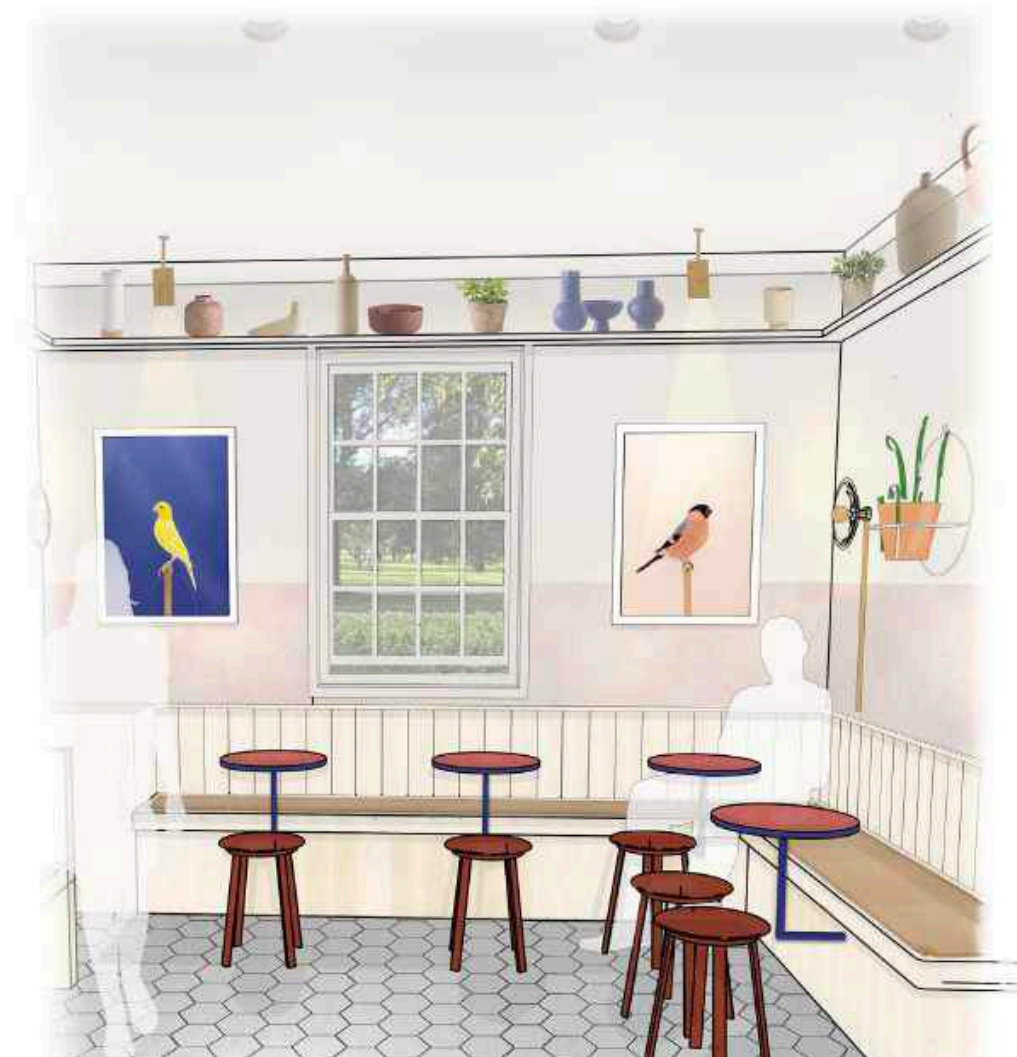
CLEAN . ELEGANT . WARM . INVITING . FUNCTIONAL . TOUCHES OF AVIARY REFERENCES

Detailing re-interpreted from early aviary forms// Warmer tonal palette inspiration drawn from Autumnal St James Park//

- I completed drawings pack and visuals. Coordinating kitchen, electrical, design and builders drawings
- Made regular site visits, liaising with the main contractor and the Royal Parks team
- Put together an art and accessories pack, and liaised with a planting consultants on a large selection of plants for the back garden.
- Budgeting



Elegants detailing, aviary references in lighting and furniture. Robus and beautiful materials.



Bespoke banquette and tables with contrast metal boarder
Brass and beige spray-painted steel gantry.
Wall lights with exposed brass conduit.

